



# WILD 2024

FUNCTIONAL  
ECOSYSTEMS

Rewilding  
Portugal





# Index

Team Leader's Message . . . . .	2
Board Member's Message . . . . .	4
Rewilding Portugal and the team . . . . .	5
Rewilding Portugal in numbers . . . . .	6
Interview with Carolina Soto-Navarro (Rewilding Europe) . . . . .	8
Côa Corridor Map: landscapes and rewilding areas . . . . .	11
100 guarding dogs delivered by Rewilding Portugal . . . . .	12
“Atento”: the new woollen shoe that supports coexistence with the wolf . . . . .	14
Rewilding efforts supporting the roe deer comeback to the Greater Coa Valley . . . . .	16
LIFE WolFlux: foundations for the return of the Iberian wolf south of the River Douro . . . . .	18
LIFE LUPI LYNX: new transboundary project to recover Iberian wolf and lynx . . . . .	22
The wild rabbit, fundamental hero and key player in the recovery of the Iberian lynx . . . . .	24
Wildcat identified for the first time in a rewilding area . . . . .	26
European bison arrived for the first time in Portugal . . . . .	27
New study delves into the history of fire in the Greater Côa Valley . . . . .	30
“Wilder Côa” premiered in 2024 . . . . .	32
Interview with the filmmaker João Cosme . . . . .	34
Wild Côa Network: year of growth and solidification of the project . . . . .	36
First wildlife observation hide opened in the Greater Côa Valley . . . . .	42
Interview with Telma and Xavier (Quinta Vale do Tourão) . . . . .	44
Interview with Conceição Matos (Planalto Dourado) . . . . .	46
4th Rewilding Photo Contest repeated and extended success . . . . .	46
Interview with the rewilder Fábio Inácio . . . . .	48
Partnerships . . . . .	51
Supporting the work of Rewilding Portugal . . . . .	52
In memory of João Paulo Sousa . . . . .	53

2025, Rewilding Portugal  
info@rewilding-portugal.com

Title: Wild 2024  
Author: Rewilding Portugal  
Graphic Composition: João Carvalho

Printing: 360imprimir  
Paper Type: Recycled Paper (80g)  
Printed: 100 units (1st edition)



# From Paper to Practice

## The Iberian Wolf Needs More than Plans in 2025

The year 2024 brought with it significant advances, but also worrying challenges for biodiversity conservation in Portugal. As Rewilding Portugal's Team Leader, I have the privilege of witnessing on a daily basis the complexity and beauty of the ecosystems we are working to restore. However, this year has also confronted us with the harsh reality that, despite our best efforts, we are still far from achieving a functional ecological balance.

Functional ecosystems depend on the interactions between all their components, from primary producers to top predators. The Iberian wolf plays a crucial role in this dynamic, acting as a natural regulator of herbivore populations. Its presence not only maintains the balance of prey species, but also influences the structure of vegetation and the health of habitats.

Since 2019, we have been participating in the monitoring efforts of wolf packs in Portugal, with a special focus on the region south of the Douro, where the species faces critical challenges. Despite some progress, habitat fragmentation and human pressure continue to threaten their survival.

The results of the new national Iberian wolf census, carried out in 2021 and 2022 and released just weeks before the end of the year, revealed important data on the distribution and state of populations. However, these figures became outdated almost immediately after a wolf was shot in the head on Christmas Eve and found at the gates of a village. The wolf belonged to a pack

that was considered stable. This incident emphasises the fragility of wolf populations and the need for more effective conservation measures.

The situation south of the Douro is particularly worrying. The wolf population in this region continues to decline, with little sign of recovery. The lack of connectivity between habitats and the scarcity of natural prey are critical factors that need to be addressed urgently.

The Action Plan for the Conservation of the Iberian Wolf (PACLobo), which was supposed to be a fundamental instrument for protecting the species, has failed to fulfil its purpose. The inaction of ICNF has left us without concrete measures to halt the species' decline. While monitoring and plans continue to be drawn up, the courage to implement decisive actions to guarantee the Iberian wolf's recovery is lacking. For example, Rewilding Portugal has tried to reinforce the population of roe deer south of the Douro river, in collaboration with local hunting associations with serious commitments to good hunting practices, but has never managed to obtain the necessary authorisations to do so from the ICNF.

The decade 2021-2030 has been declared by the UN as the Decade of Ecological Restoration. However, in Portugal, we seem to be more focused on plans and reports than on concrete actions. Monitoring is essential, but it cannot replace the implementation of active conservation and restoration measures. In 2024, we continued to document the decline of species and habitats, but failed to reverse this trend.



ANDONI CANELA

One of the most surprising milestones of 2024 was the fact that the number of Iberian lynx in Portugal surpassed the number of Iberian wolves. This is a testament to the success of lynx conservation efforts, but also a reminder of the precarious state of the wolf. While we celebrate the recovery of the lynx, we must not forget that the Iberian wolf continues to fight for its survival. Faced with the social acclaim for the lynx's return, we are stunned by the political use to which the wolf is being put at European level, to the point where the level of protection of the species has been reduced based on unscientific criteria, electoral opportunism and blaming the species for the problems that sectors such as agriculture, livestock and hunting are suffering due to systemic and economic constraints.

In 2024, we concluded the LIFE WolFlux project, co-funded by the European Union, which aimed to improve coexistence between the Iberian wolf and local communities. This project, implemented in partnership with various organisations and led by Rewilding Portugal, focused on measures to prevent attacks on domestic animals and the ecological restoration of important areas for the wolf's wild prey, in particular the roe deer.

The results of LIFE WolFlux have been encouraging. By installing fixed and electric fencing, and integrating guarding dogs and livestock, we were able to significantly reduce conflicts between wolves and human activities. In addition, the project promoted environmental education and the involvement of local communities, creating a solid basis for long-term coexistence.

However, the success of LIFE WolFlux also reminds us that one-off projects are not enough. It is essential that these measures are integrated into public policies and that they receive ongoing funding. Iberian wolf conservation requires a lasting commitment and a holistic approach that goes beyond the limits of temporary projects. The current damage compensation system is bureaucratic and time-consuming, and urgently needs to be reviewed and changed through a process involving all stakeholders.

2024 was a year of reflection and warning. Despite progress in some areas, Iberian wolf conservation and ecological restoration in Portugal continue to face significant obstacles. We need fewer plans and more action. We need the courage to implement concrete measures that guarantee the recovery of ecosystems and the species that depend on them.

As team leader of Rewilding Portugal, I call on all partners, authorities and citizens to unite in this mission. The future of the Iberian wolf and our ecosystems depends on the choices we make today. Let's make sure that 2025 is a year of action and hope.



**Pedro Prata**  
Team Leader  
at Rewilding  
Portugal

# From Ecosystem Functionality to Landscape Multifunctionality

The challenges we face today to guarantee human and planetary health are some of the most demanding in human history. The speed and intensity of the transformations we are witnessing make it clear that we depend not only on the availability of natural resources but also on their state of conservation. This is widely recognised by scientific and intergovernmental panels, which warn of the need to look at the health of people and the planet according to the same concept - One Health. If, on the one hand, the concept of human health is easily perceived as being associated with well-being, both physical and psychological, the concept of environmental health is not so clear-cut. Environmental health therefore depends on a favourable state of functioning of the ecosystems that ensure the essential ecological processes on which the chain of life depends, from microorganisms to the human species. In other words, people's health is deeply related to the quality of the air we breathe, the water we drink, the safety of the food we eat and the quality of the socio-economic environment in which we live.

The concept of a functional ecosystem refers precisely to the functioning and state of conservation of the nutrient cycle, energy flows between materials and resources, and the dynamics of animal and plant populations, in a balanced and sustainable way. This means that if the interactions between the physical and biological components of an ecosystem occur in a healthy way, allowing for natural regeneration and the conservation of biodiversity, this is an unavoidable contribution to the state of global health, which includes people, other non-human living beings and the planet. As such, an ecosystem performs not just one function, but simultaneously a multiplicity of ecosystem functions and services, and should therefore be called a multifunctional ecosystem since, in addition to maintaining essential ecological processes, it provides diversified benefits, such as agricultural and forestry production, soil conservation, carbon retention, climate and water regulation, and biodiversity conservation, as a support for human activities, reducing the risks and vulnerabilities to which they are subject. Added to these multiple functions is the oppor-

tunity to enjoy a qualified environment and landscape in the context of tourism, recreation and leisure activities, which are increasingly relevant to the economic and socio-cultural dynamics between urban and rural territories.

The main characteristics of a healthy multifunctional ecosystem include: (i) the presence of a diversity of species that ensures stable ecological interactions; (ii) an efficient nutrient cycle, in which organic matter is decomposed and reused, maintaining soil fertility; (iii) a continuous energy flow, in which solar energy is captured by plants (producers) and distributed through the food chain (consumers); (iv) good climate and water regulation so that the ecosystem can ensure efficient water retention and thermal regulation; and (v) resilience so that the ecosystem can recover from disturbances such as fires, droughts, diseases, pests or the introduction of invasive species. If an ecosystem loses its functionality, it can collapse, affecting ecological services such as oxygen production, water purification, soil fertility and biodiversity balance, jeopardising people's well-being and the development of their activities.

The Greater Côa Valley is an outstanding national and international example of the application of multifunctional ecosystem conservation concepts and objectives, where the ambitious geographical scale of Rewilding Portugal's work takes us into a broader context of multifunctional landscapes, demonstrating that a sparsely populated territory can become a living, dynamic and adaptive landscape, where the valorisation of natural capital, human capital and the ecosystem services provided corresponds to enormous benefits for people, wildlife and the local and regional economy.



**Rosário Oliveira**  
*Landscape Architect, PhD, and RP Board Member*

# Rewilding Portugal



Rewilding Portugal is a private non-profit organisation, created in January 2019 in Guarda, whose mission is to promote nature conservation through rewilding measures in Portugal. The organisation is currently in the Greater Côa Valley region, with the aim of bringing nature back on a large scale and promoting local, more

sustainable nature-based economies in this great ecological corridor that is the Côa. Rewilding Portugal is part of the Europe-wide network of rewilding landscapes coordinated by Rewilding Europe and is working closely with various partners to achieve the common goal of making Portugal a wilder place.

## A Equipa



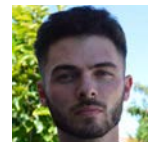
**Pedro Prata**  
Team Leader



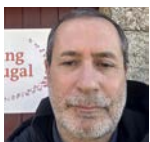
**Marta Cálix**  
Head of Operations



**Sara Aliácar**  
Head of Rewilding



**Fernando Teixeira**  
Head of Communication and Enterprise



**Rui Martins**  
Head of Finance



**André Couto**  
Rewilding Officer



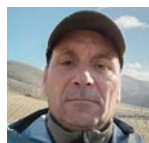
**Pedro Ribeiro**  
Rewilding Officer



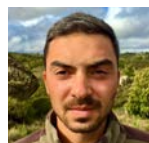
**Carlos Santos**  
Enterprise Officer



**Marta Vieira**  
Coexistence Officer



**Vítor Galas**  
Field Team Manager



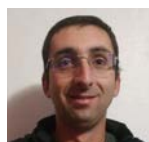
**Gonçalo Matos**  
Herd Manager



**Rui Marques**  
Paul de Toirões Manager



**Miguel Pontes**  
Surveillance Team



**Nuno Paixão**  
Field Officer



**António Letras**  
Field Officer



**Sofia Capelo**  
Administrative Assistant



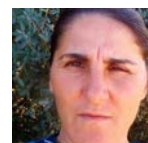
**Edmilton Vaz**  
Finance Officer



**Alexandra Oliveira**  
Rewilding Centre Manager



**Abel Coito**  
Ribeira do Mosteiro Custodian



**Lurdes Coito**  
Ribeira do Mosteiro Custodian



**Tiago Pinho**  
Project Manager



**José Fontes**  
Project Developer

## The Board

Hendrick Adriaan Van Beuninguen

Miguel Bastos Araújo

João Wengorovius Meneses

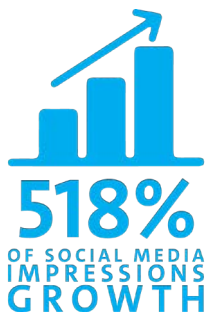
Maria do Rosário Gaspar de Oliveira

Graça Maria da Fonseca Caetano Gonçalves

# Rewilding Portugal in numbers

These numbers are global and represent the total numbers since 2019

■ General  
 ■ Rewilding  
 ■ Entrepreneurship  
 ■ Communication





**108**  
GUARDING DOGS  
INTEGRATED



**49M**  
VIEWS  
ON YOUTUBE  
AND TIKTOK



**182**  
PATREON  
SUBSCRIBERS

**34.280€**  
GENERATED

BY WILD CÔA NETWORK  
MEMBERS FROM REWILDING  
PORTUGAL OR OTHER MEMBERS



**4.575**  
WILD CÔA  
NETWORK  
PRODUCTS SOLD

**58**  
ILLEGAL  
HUNTING TRAPS  
DETECTED / REMOVED



**20**  
REWILDING TOURISM  
EXPERIENCES SOLD



**125.000**  
FOLLOWERS  
ON SOCIAL  
MEDIA



**100**  
HECTARES  
OF NATIVE FOREST  
RESTORED



**23**  
FIRE ASSISTANCES



**1.100**  
PARTICIPANTS  
IN REWILDING  
PHOTO CONTESTS



**30**  
SEMI-WILD SORRAIA  
HORSES IN REWILDING AREAS



**18**  
NEW COUPLES OF  
CINEREOUS VULTURES  
CONFIRMED IN MALCATA  
MOUNTAIN NATURAL RESERVE

**3** REWILDING  
AREAS  
OPEN TO VISITATION



**376**  
PLANT SPECIES  
RECORDED IN THE AREAS

**16** SEMIWILD  
TAUROS IN  
REWILDING AREAS



**1st**  
WILDLIFE OBSERVATION  
HIDE INSTALLED IN A  
REWILDING AREA

# Interview with Carolina Soto-Navarro, new Rewilding Europe's Head of Wilder Nature

*CAROLINA SOTO-NAVARRO RECENTLY TOOK ON THIS NEW ROLE IN THE REWILDING EUROPE TEAM AND IS BRIDGING THE GAP BETWEEN THE CENTRAL TEAM AND THE REWILDING LANDSCAPE OF THE GREATER CÔA VALLEY. IN AN INTERVIEW SHE DISCUSSES THE REGION, ITS POTENTIAL FOR REWILDING AND ALSO THE MAIN CHALLENGES AT THIS STAGE. MUCH HAS BEEN DONE, MUCH REMAINS TO BE DONE AND THERE IS GREAT HOPE FOR RESULTS ON A LARGER SCALE AND WITH MORE IMPACT.*

## **What do you think sets rewilding apart from other nature conservation approaches?**

Rewilding marks a shift in thinking where we give control back to nature. We focus on restoring natural processes and self-sustaining ecosystems with minimal human intervention. It is an approach that moves a step further than simply preserving or managing specific species or habitats. For me, 5 critical distinctions include the emphasis on restoring ecological processes by reintroducing predation, herbivory, and natural disturbances (such as wildfires or erosion) so ecosystems can regenerate and adapt dynamically; the recovery of keystone species – we need to bring back the main actors to the big amphitheatres of nature. Species like lynxes and Tauros play critical ecological roles, helping regulate and balance ecosystems naturally; large-scale restoration – Rewilding focuses on vast, interconnected landscapes to create resilient systems where species can move and adapt freely; shifting baselines and open-ended future-oriented thinking – rewilding recognises ecosystems as ever-changing, rewilding avoids maintaining historical states, instead allowing natural evolution, especially in the face of climate change.; and we put people back at the core! - rewilding fosters solutions where people and nature thrive together, benefiting local economies and well-being. Overall, for me rewilding is a forward-thinking approach to tackling biodiversity loss and the climate crisis. It champions natural resilience, ecological health, and biodiversity restoration, not by rigidly recreating the past, but by unlocking the power of nature to adapt and flourish. And even more importantly, it provides a positive and hopeful narrative! It generates optimism and inspires change for a future where people and nature not only co-exist but thrive alongside each other.

## **In this new function of Head of Wilder Nature for Rewilding Europe what have been your greatest challenges and successes in this initial stage?**

My role offers me a chance to contribute meaningfully to shaping the future of our European landscapes – a meaningful but immense responsibility! I focus on delivering “Functioning Ecosystems” and “Wildlife Comeback,” key areas of the Wilder Nature component of the Rewilding Europe Strategy 2030. This involves from driving efforts to secure land for large-scale rewilding, achieving targets for wildlife recovery and human-wildlife coexistence, to operationalizing rewilding visions across our 10 landscapes. Expanding rewilding efforts in forests and marine ecosystems is also central to my work. A major challenge has been quickly understanding how I can best contribute to these areas. You can't influence what you don't fully grasp, and each rewilding landscape has unique contexts and challenges! But for me, one of the best bits of my job is getting out, visiting the places where we do rewilding with our teams and partners. There's so much going on! I'm fortunate to lead a diverse and dedicated team at the forefront of rewilding. One of my proudest achievements has been driving a difficult internal transformation, turning challenges into opportunities. The team I've built embodies passion, strategic thinking, pragmatism, and a result-oriented mindset. They are resilient, self-motivated, and not afraid of risks. So, what can really stop us? Another accomplishment is the early progress of the Rewilding Europe Land Facility. This initiative aims to help our landscapes secure land for rewilding, addressing one of the greatest challenges in my role—unlocking land at scale across Europe. Though still in its infancy, this could have the potential to be transformative.





**You are currently working directly with the Greater Côa Valley. What do you think about the rewilding potential of this landscape, the challenges and the work currently being done on the field in the different components?**



As a Mediterranean, the Greater Côa Valley holds a special place in my heart. I grew up running through Dehesas and swimming in river gorges, surrounded by the scents of lavender and wild thyme. The valley brings back memories of warm summer evenings under ancient oak trees. But I have also seen myself what happened to many of these landscapes in the Iberian Peninsula. People just left. Rural abandonment left its mark. Mediterranean forests were cleared for timber, agriculture, or charcoal, soils lost fertility and agricultural faltered. Species like wild boar, Iberian wolf, and roe deer were overhunted disrupting food chains, apex predators neared local extinction, and key prey species dwindled. All these signs of the past are still very present across the landscape. Our team has huge challenges ahead to reverse this ecological damage. It will take time to bring the region into a new phase in its socio-economic and ecological history. But I see a great opportunity in the Côa region. Rural abandonment has created unique conditions for nature and wildlife comeback. Our vision of a wildlife corridor in the Greater Côa Valley that supports the

recovery of biodiversity-rich Mediterranean landscapes is feasible. Though I will not sugar-coat it - we have worked great lengths, but there's still a lot of challenges out there. When you visit though what it is for me one of our jewels of the crown, Ermo das Águias ('wilderness of the eagles'), a rewilding site in the northern region of the landscape, you can experience what is possible. Seeing the Sorraia horses doing what they do - eat, trample, create mosaics in the landscape, maintain grasslands, create natural firebreaks, disperse seeds - it fills me with hope an enthusiasm for a wilder future for this region. Under rewilding principles, the forests will have a chance to expand and mature, and to restore the complex web of woodland life. What a dream would be for me to see the comeback of the Iberian lynx to Ermo das Águias one day! Another source of pride is The Wild Côa Network. It exemplifies how a modern, nature-based economy can transform a region and serve as a role model. Kudos to Pedro, Fernando, and the entire team for building this foundation! Moving forward, my advice is to strengthen the network's identity around rewilding the Côa and foster grassroots support. Let's focus on impactful actions, ensuring all members become true ambassadors for a Wilder Côa. Together, we can build a movement that benefits both nature and the local community.



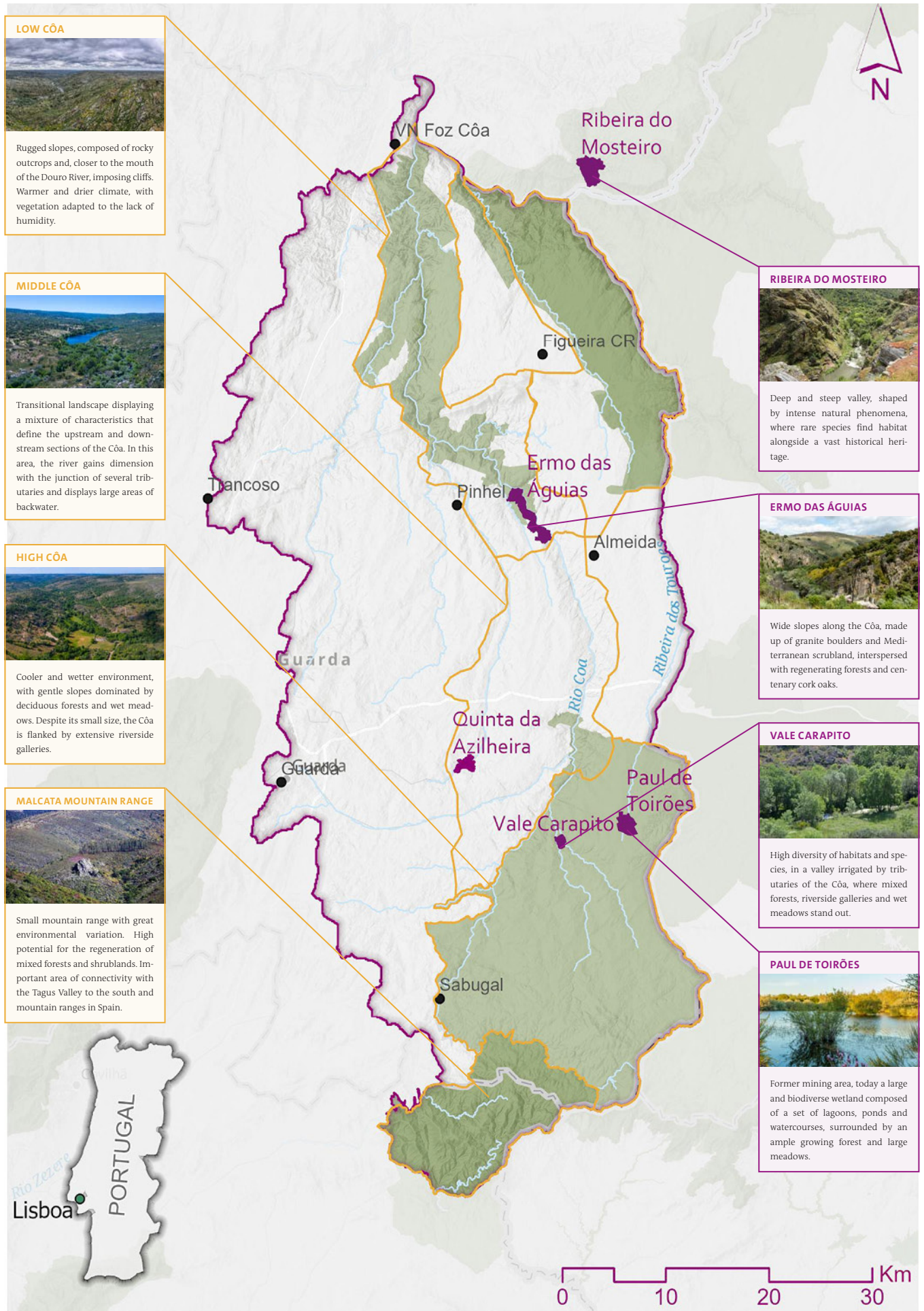


*STAY AT THE REWILDING CENTRE AND DISCOVER THE WILDEST SIDE OF PORTUGAL*

 Favorito dos hóspedes 

Uma das casas preferidas pelos hóspedes na Airbnb

5,0  
★★★★★



# Rewilding Portugal has passed the milestone of 100 guarding dogs delivered

## Improving coexistence between humans and wolves south of the Douro River

*THE LIVESTOCK GUARDING DOG INTEGRATION PROGRAMME CARRIED OUT BY REWILDING PORTUGAL AS PART OF THE LIFE WOLFLUX PROJECT, WHICH HAS NOW COME TO AN END, REACHED ITS IMPRESSIVE GOAL IN 2024 OF DELIVERING 100 DOGS TO LOCAL PRODUCERS. BY REDUCING LIVESTOCK PREDATION, THE PROGRAMME SUPPORTS THE RECOVERY OF THE ENDANGERED AND ECOLOGICALLY IMPORTANT IBERIAN WOLF.*

### **Living with wolves**

Today, many wolf populations in Europe are increasing, something that is not yet the case in Portugal, but which is great news because these fundamental predators help restore the health and functionality of wild nature. However, the return of this iconic and ecologically important species poses challenges, including an increased risk of livestock predation. One of the best ways to minimise this predation, and thus improve coexistence between humans and wolves, is to strengthen animal protection measures.

Since 2020, the Rewilding Portugal team has been running a livestock guarding dog programme, providing dogs free of charge to local producers so that they can better protect their sheep, goats, cows, pigs and horses

from predation by Iberian wolves. The programme reached an impressive milestone in 2024, with 100 dogs delivered. Although the programme reached its target of 100 dogs, the team delivered several more dogs as part of the LIFE Wolflux initiative, which ended at the end of 2024. This livestock dog integration programme has complemented the Rewilding Portugal team's efforts to increase the availability of natural prey for wolves by strengthening local roe deer populations.

### **Beneficial impact**

Marta Vieira, a veterinarian in the Rewilding Portugal team who is responsible for selecting, integrating and monitoring the evolution of the dogs, said she was pleased that the programme had reached this important milestone.

'Although the dogs haven't completely prevented wolf attacks, many producers haven't suffered a single attack since receiving a dog. In general, dogs are effective. They will undoubtedly reduce predation by Iberian wolves and help farmers to live with them, which is good for both people and nature.'

### **A proactive measure**

Studies estimate that the Portuguese population of the Iberian wolf (a subspecies of grey wolf) currently numbers between 250-300 animals, divided into two by the Douro River. While the subpopulation north of the Douro is larger and more stable, south of the river there are only a few scattered packs. The lack of natural prey, such as roe deer, means that these packs have no choice but to attack cattle, which causes conflicts with farmers and often results in the animal being hunted down.



Although some livestock owners south of the Douro still use guarding dogs, the tradition has died out in many areas - especially those where wolves are rarely seen. But with the Rewilding Portugal team working to support the wolf's return, incorporating guarding dogs with livestock in areas where wolves may return is a proactive measure that can avoid coexistence problems.

#### **Comprehensive support**

The dogs involved in the livestock guarding dog programme are given to livestock owners as puppies from litters of existing livestock guarding dogs. This allows them to be integrated into herds and flocks and create a strong bond with the animals they are supposed to protect. The dogs are of the Serra da Estrela or Cão de gado transmontano breeds - both traditionally used as cattle dogs in Portugal.

The farmers who received the dogs are based in the districts of Guarda, Aveiro and Viseu, with one in the neighbouring district of Castelo Branco. Sometimes members of the Rewilding Portugal team offer a dog to a producer who has suffered a wolf attack, or is at risk of one, and sometimes the producers themselves approach the team after hearing about the programme. As well as receiving a dog free of charge, they receive dog food for a year, while Rewilding Portugal covers the veterinary and insurance costs of each dog for two years. The team also provides support and counselling to ensure that the dogs integrate well with the livestock.

#### **Creating community involvement**

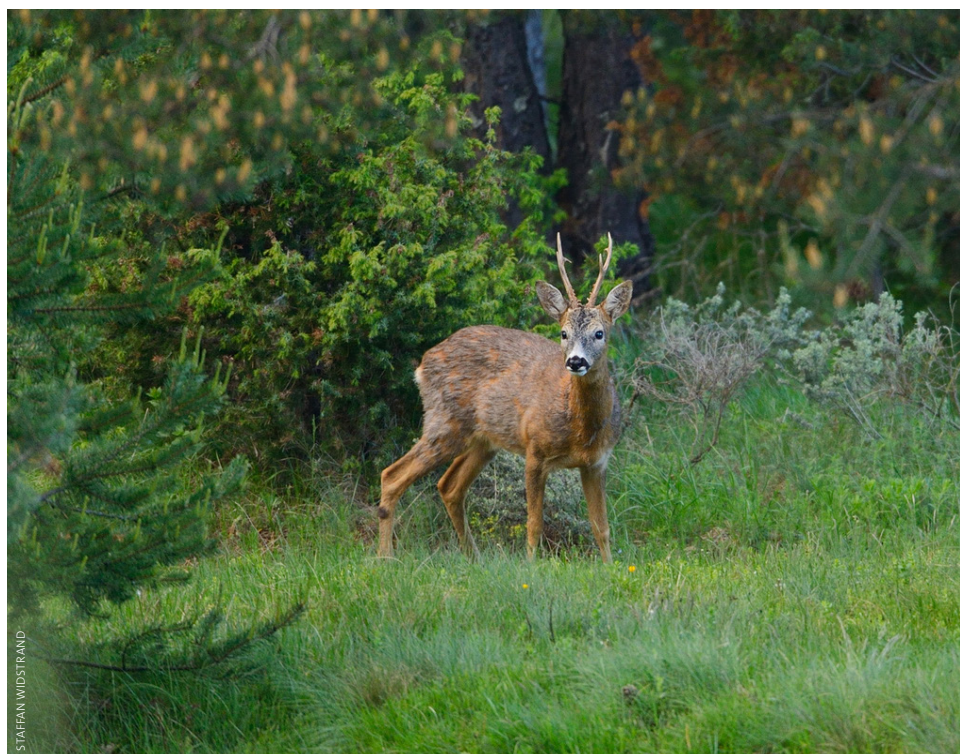
To better understand people's attitudes towards the Iberian wolf south of the Douro - and inform measures to support the animal's existence and return - the Rewilding Portugal team carried out an eight-month study into public attitudes, which ended in April 2020 at the start of the project. Almost half of those interviewed were open to living alongside wolves, but only under certain conditions, including better protection for livestock.

'The programme really helped us to engage with local producers and raise the profile of rewilding and Rewilding Portugal,' says Marta Vieira. 'Initially, many producers in the area covered by the programme were sceptical about using guard dogs to protect livestock. But when they began to see how well it works, they started asking for it. People's opinions about the effectiveness of guard dogs have definitely become more positive.' Now, with the end of the project, this study of perceptions will be repeated to assess changes caused by the implementation of the LIFE WolFlux project.

#### **An expansion of the geographical scope**

Although the LIFE WolFlux project has ended, the Rewilding Portugal team and partners are

continuing to work to increase the use of livestock dogs and their numbers, as well as to improve coexistence between humans and wolves through the LIFE LUPI LYNX project, which centres on an area adjacent to that of the LIFE WolFlux initiative in Portugal, and across the Spanish border in Extremadura, and which started in early 2024.





WILDLING SHOES

# “Atento”

## The new wool shoe that supports coexistence with the Iberian wolf

*AFTER A SUCCESSFUL FIRST EDITION WITH THE ‘PERTO’ MODEL, WILDLING SHOES AND REWILDING PORTUGAL CONTINUE TO COLLABORATE WITH LIVESTOCK FARMERS TO PROMOTE COEXISTENCE WITH THE IBERIAN WOLF AND THE USE OF PREVENTATIVE MEASURES WITH THE NEW ‘ATENTO’ SHOE MODEL, PRODUCED WITH WOOL FROM PRODUCERS IN THE GREATER CÔA VALLEY.*

### **The impact of a shoe in the communities and the landscape**

This collaboration between Wildling Shoes and Rewilding Portugal, now in its third year, has established a bridge between the German sustainable footwear company and the region’s livestock farmers. The first model appeared in 2023, telling a story of proximity and synergies. The wool used in the ‘Perto’ model promotes the implementation of damage prevention measures such as fencing and livestock guardian dogs, as well as animal welfare.

The launch of the ‘Perto’ model was a success and this exclusive edition sold out in just a few months.

Wool was a product that had lost its market value, to the point where many producers in the region had to keep it because they couldn’t find a way to sell it. This initiative allowed the wool to be paid at fair prices to the producers and used to shoe people all over the world.

This collaboration has generated, on average, an additional income of 500 euros/year per producer through the sale of their wool, which con-

tributes significantly to the annual maintenance costs of their damage prevention measures.

In addition, Wildling Shoes pays for shearing services for the 11 livestock farmers involved in the project, which saves each one an average of 300 euros/year.

The growth of this partnership has been responsible for creating a job in the region, hiring a person to manage the shearing season and supporting the producers with animal welfare issues.

These positive figures and the very strong public support led Wildling Shoes to launch a new model of footwear this year. Keeping the basic idea of promoting coexistence in the southern Douro region, but with a new colour and a new name: Atento. If ‘Perto’ wanted to demonstrate proximity to local communities, wildlife and the link with our outreach work, this new model, ‘Atento’, brings again the public’s attention to this project of coexistence and circularity.

This new model is now available to order worldwide here:

<https://www.wildling.shoes/en/products/atento>

### Building coexistence

The outreach work began five years ago with livestock producers operating in the Iberian wolf's distribution area south of the River Douro, providing support in implementing measures to prevent damage to livestock on their farms. These measures include management practices that reduce the risk of predation on livestock and the use of tools such as livestock protection dogs and the installation of electric (mobile or fixed) and metal fencing.

To date, Rewilding Portugal has delivered 108 guarding dogs and 46 fences, supporting more than 80 livestock breeders such as cattle, sheep, goats, pigs and horses.

The support for damage prevention measures was carried out as part of the LIFE WolFlux project, funded by the European Union and the Endangered Landscapes and Seascapes Programme, and coordinated by Rewilding Portugal in partnership with Rewilding Europe, the University of Aveiro, Zoo Logical and the Transmumância e Natureza Association. The project aims to promote the ecological and socio-economic conditions necessary to support the viability of the Portuguese Iberian wolf sub-population south of the River Douro, which is currently fragmented and highly isolated from the rest of the Iberian population due to ecological and social barriers.

These shoes also have the active participation of the Tavares SA and Ecolã units.

'Atento', as well as "Perto", contribute to the coexistence of humans and wild-

life, allow for production chains of 150 kilometres between the origin and the final product, guarantee high animal welfare standards and fair payment to livestock farmers.

If we were already 'close by', now we're also 'paying attention'. Come and wear a pair that makes a difference and contributes to coexistence with endangered species.



# Rewilding efforts support roe deer comeback in the Greater Côa Valley

*A SURVEY CARRIED OUT BY THE UNIVERSITY OF AVEIRO HAS SHOWN THAT REWILDING EFFORTS IN THE GREATER CÔA VALLEY ARE HELPING ROE DEER RETURN TO THE LANDSCAPE. THIS IS GOOD NEWS FOR IBERIAN WOLVES – AND FOR LOCAL FARMERS.*



## Enhancing human-wolf coexistence

Iberian wolves are keystone predators that help to maintain the health and functionality of wild nature. South of the Douro River, the Rewilding Portugal team have been working to support the recovery of the local Iberian wolf population, which currently comprises a handful of scattered packs. A lack of natural prey, such as roe deer, means these packs have no choice but to prey on livestock, which causes conflict with farmers and often results in the animal's persecution. This is why the team initiated a livestock guard dog programme, which recently saw the 101st dog handed over to a local farmer.



The Rewilding Portugal team have also been carrying out measures to support roe deer comeback south of the Douro since 2019. These also have the potential to enhance human-wolf coexistence by helping to reduce wolf predation on livestock. The measures, which involve habitat restoration and the establishment of hunting no-take zones, are part of a scaled up rewilding programme, carried out with funding from the Endangered Landscapes & Seascape Programme and the LIFE Programme of the European Commission.

## Positive impact

“The upward trend in roe deer abundance and range is very welcome,” says Sara Aliácar, Rewilding Portugal’s former Head of Rewilding. “While roe deer are returning to the landscape regardless of rewilding measures, our efforts are helping to reinforce the process. Collaboration with parishes, landowners, and hunting associations has been vital to the success of these efforts.”

The survey revealed roe deer population growth in all the sampling areas, including core areas of the Greater Côa Valley wildlife corridor, coinciding with the start of rewilding efforts designed to support roe deer comeback. Significantly, it revealed notable increases in roe deer numbers within all the rewilding sites where the Rewilding Portugal team have been carrying out restoration measures, such as Vale Carapito, Paúl de Toirões, and Ermo das Águias. Populations of wild boar, another important prey species for Iberian wolves, also showed a significant increase in all the sampling areas.

“The increasing availability of natural prey for Iberian wolves south of the Douro will help to maintain the long-term viability of wolf subpopulations,” says Aliácar. “It is also good news for farmers. Wild prey has been scarce in the survey area for decades – if wolves have an alternative, predation on livestock will potentially decrease.”

### Promoting population expansion

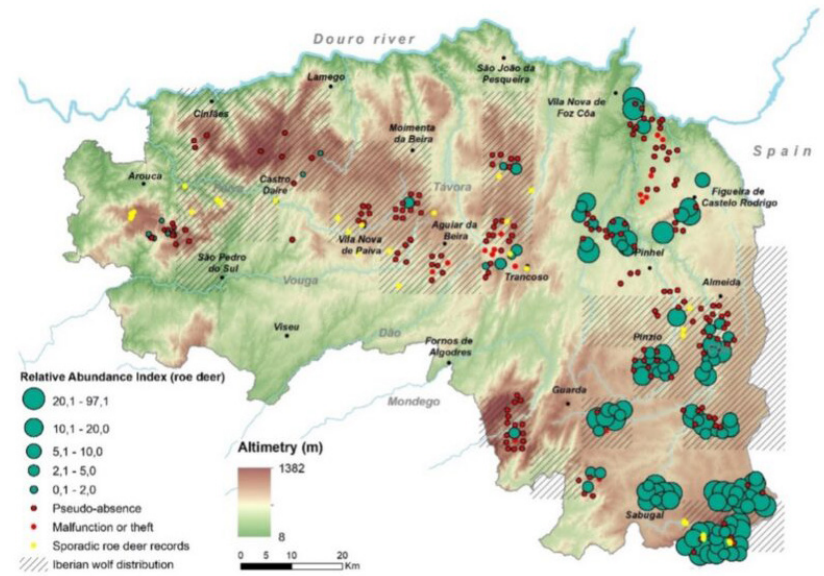
To support roe deer comeback, the Rewilding Portugal team have carried out a range of measures to restore habitat in and around the Greater Côa Valley. They have supported local hunting associations and managers of common land in the creation of 35 ponds, the restoration of areas that have been burned by wildfire, planting to recover the seed banks of trees, and the clearing of shrubs to restore grassland, promote natural regeneration, and reduce fire risk. Within rewilding sites, several hectares of land have been declared no-take hunting zones. Across the survey area the hunting of roe deer is limited, as population densities are too low.

In terms of their return to the Greater Côa Valley rewilding landscape, the survey results show roe deer moving from south to north, and from east to west. The highest abundances of roe deer are currently in the south of the landscape.

“While roe deer are already widely distributed across the Greater Côa Valley, moving forwards efforts should focus on promoting the westward expansion of the species,” says Sara Aliácar. “In collaboration with the University of Aveiro, we have developed a hunting management plan with local hunting associations encompassing 16,000 hectares of land. It’s important such associations are involved in measures to support the ongoing comeback.”

The availability of other wild prey species for Iberian wolves south of the Douro may soon become a factor in helping to reduce livestock predation. Following the reintroduction of red deer in central Portugal in the 1990s and early 2000s, the Rewilding Portugal team are now recording the species for the first time in the Greater Côa Valley. They are also advocating for the reintroduction of Iberian ibex in the

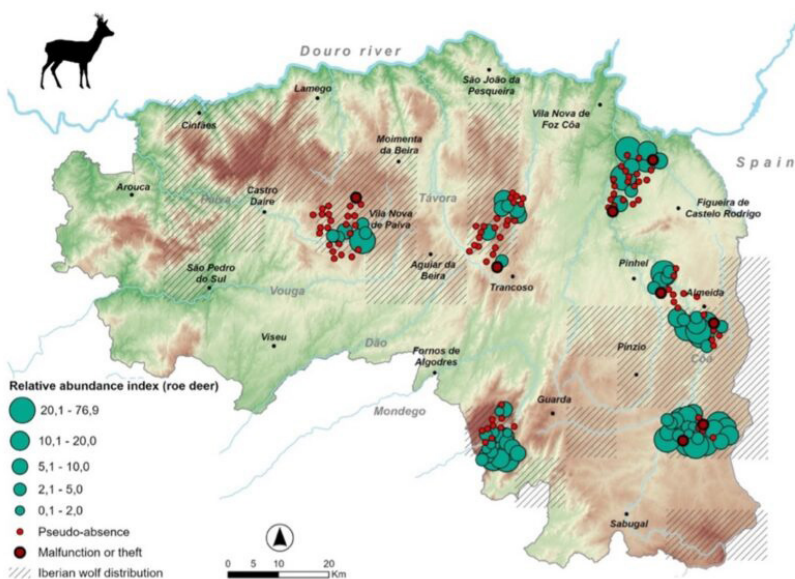
Serra da Estrela Natural Park. A subspecies of Iberian ibex – the Portuguese ibex – used to be widespread across rugged areas of Portugal, but hunting and habitat loss drove it to extinction in the 1870s. Following reintroductions, another subspecies – the Western Iberian ibex – is now present in small numbers in northern Portugal’s Peneda-Gerês National Park.



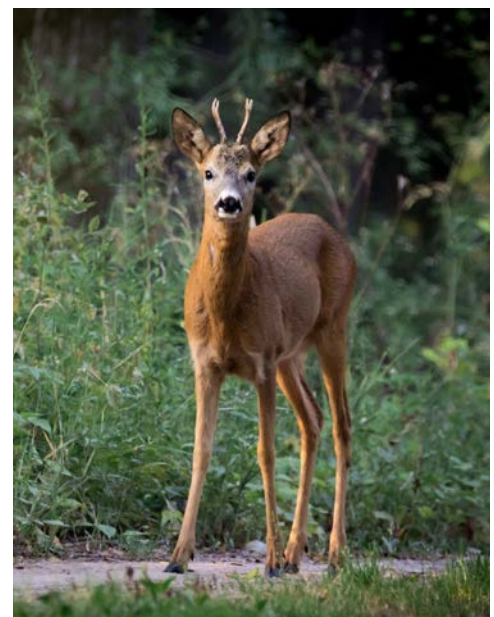
Roe deer abundance in the study area in 2019-2020

### Ongoing monitoring

Moving forwards, the Rewilding Portugal team will continue roe deer monitoring within the rewilding sites distributed across the Greater Côa Valley rewilding landscape. Monitoring will also be carried out by the team and the University of Aveiro as part of the recently launched LIFE LUPI LYNX initiative, which will see a range of partners collaborate to support the recovery of Iberian lynx and Iberian wolf populations south of the Douro River in Portugal and Spain.



Roe deer abundance in the study area in 2022-2023





# LIFE WolFlux

## Rewilding efforts lay the foundations for the return of the Iberian wolf south of the Douro river

*OVER THE LAST SIX YEARS, REWILDING PORTUGAL HAS CARRIED OUT A WIDE RANGE OF ACTIONS TO ENABLE THE NATURAL RECOVERY OF THE IBERIAN WOLF SOUTH OF THE DOURO RIVER. IN COLLABORATION WITH LOCAL PARTNERS AND WITH THE SUPPORT OF THE EUROPEAN COMMISSION, THE 'LIFE WOLFLUX' PROJECT PROVIDED A SOLID FOUNDATION FOR THE ONGOING WORK TO ENSURE A BETTER FUTURE FOR THIS ICONIC SPECIES. IT HAS NOW OFFICIALLY COME TO AN END, BUT ACTIONS ON THE GROUND CONTINUE.*

### **Towards Iberian wolf comeback**

The Iberian wolf is an iconic apex predator which plays a vital role maintaining the health and functionality of wild nature. Once widespread across Portugal, its population has shrunk significantly in size and range due to habitat loss, persecution, and a lack of wild prey. Today, however, efforts to restore landscapes and promote coexistence with people are beginning to yield encouraging results, representing a first step towards enabling Iberian wolf comeback in areas of the country where it is clinging on.

There are currently around 250 to 300 Iberian wolves in Portugal. Most of these are found north of the Douro River, in a relatively stable subpopulation. The remainder, around 14%, are found south of the river. These animals are in a more precarious position, distributed across a handful of scattered, disconnected packs. Some are found within the borders of Rewilding Europe's Greater Côa Valley rewilding landscape, while others are located to the west. For many years,

rewilding efforts focused on supporting these scattered packs have worked to improve connectivity, with the aim of supporting population recovery and genetic exchange with other wolf populations across the border in Spain.

"The Iberian wolf population south of the Douro is one of the most endangered in Europe," explains Sara Aliácar, Rewilding Portugal's former Head of Rewilding. "Enhancing connectivity with other populations in Portugal and Spain is vital to its long-term survival. It is essential that wolves arriving in and living in the area find conditions that encourage them to settle, form packs, and breed."

### **Living with wolves**

Over the past six years, the LIFE WolFlux initiative – which was led by Rewilding Portugal, in partnership with Rewilding Europe, the University of Aveiro, Zoo Logical, and ATNatureza/Faia Brava – has taken a wide range of actions to enhance connectivity between Iberian wolf packs south of the Douro.



### Scientific analysis and stakeholder engagement

Gathering data and stakeholder engagement have also been key measures to better understand the ecological status of Iberian wolves, promote coexistence, and inform future actions and decision-making. An in-depth campaign to promote understanding of the ecological role of wolves was carried out, while interviews were conducted with 117 people from local communities to gauge their opinions about wolves. The results of these interviews showed that many people south of the Douro are open to living alongside Iberian wolves, provided swift compensation payments and damage prevention measures are in place.

Extensive fieldwork saw fresh genetic, distribution, and dietary data collected from all of the relevant wolf packs. This enabled the team to identify coexistence challenge hotspots and map areas with significant potential for wolf recolonisation. A dedicated surveillance team patrolled the area on the lookout for poachers, snares, and



wildfires, with 36 snares found and reported to the authorities. Groundwork was also laid to assist the development of wolf-focused nature tourism in the region, with business plans drawn up and implemented by several local enterprises.

### Securing a brighter future

Rewilding efforts focused on the Iberian wolf population south of the Douro have laid the groundwork for further interventions in the landscape, to enable this iconic and ecologically important animal to stage a comeback, and scale up the benefits it delivers to nature and people. Challenges remain, such as a need to further increase the abundance of wild prey, boost funding for damage prevention measures, investigate wildlife crime more effectively, and develop a more streamlined and collaborative compensation scheme for wolf-related damage. The negative impact of motorways on wolf pack connectivity also needs to be assessed and steps taken to mitigate this. And more investment is required to support the development of nature-based economies, with wolf watching a key attraction for wildlife enthusiasts. This would enable local communities living alongside wolves to benefit economically from their presence.

With more work required to secure a brighter future for Iberian wolves south of the Douro, a new bilingual report has called for bolder action to enhance coexistence between people and Iberian wolves. At the heart of this lies a need for deeper collaboration, compromise, and engagement between authorities, conservation NGOs, farmers, farming associations, and communities.

“LIFE WolFlux has achieved important milestones by increasing the use of damage prevention measures, adding value to products that come from farmers that coexist with wolves, and supporting the comeback of wild prey,” says Sara Aliácar. “To continue the progress that has been made and significantly improve the fragile situation of the Iberian wolf south of the Douro, further efforts and increased collaboration are necessary. We will continue to push for these.”

### Scaling Up

Rewilding is a long-term process and efforts to support Iberian wolf comeback south of the Douro are continuing and scaling up. The LIFE LUPI LYNX initiative, which was launched in January 2024, is a cross-border, multi-partner collaboration that is now building on the achievements of LIFE WolFlux to boost the recovery of the Iberian wolf and Iberian lynx in the Beira Interior region of Portugal, as well as the province of Cáceres in Spain’s Extremadura region.

The LIFE WolFlux initiative was financed by the LIFE Programme of the European Union and co-financed by the Endangered Landscapes & Seascapes Programme, which is managed by the Cambridge Conservation Initiative and funded by Arcadia, a charitable fund of Peter Baldwin and Lisbet Rausing.



DANIEL ALLEN

# DRINKING A GLASS OF WINE HAS NEVER BEEN SO WILD



RED • TINTO

OPEN  
ABRIR

SYMINGTON  
Family Estates



By buying Altano Rewilding, you are directly contributing to our rewilding efforts in Portugal



STAFFAN WIDSTRAND

# LIFE LUPI LYNX

## A new cross-border project to create conditions for the recovery of the Iberian wolf and lynx

*THE LIFE LUPI LYNX PROJECT, STARTING IN 2024 AND ALMOST COINCIDING WITH THE END OF THE LIFE WOLFLUX PROJECT, FOLLOWS ITS LEAD, BUT IN AN EVEN BROADER WAY. IT BRINGS TOGETHER PORTUGUESE AND SPANISH ORGANISATIONS IN A CROSS-BORDER EFFORT TO CREATE THE SOCIO-ECOLOGICAL CONDITIONS THAT WILL CONTRIBUTE TO THE RECOVERY OF THE IBERIAN WOLF AND IBERIAN LYNX SOUTH OF THE RIVER DOURO, IN AREAS WHERE BOTH SPECIES ARE BEGINNING TO APPEAR OR STILL HAVE AN IRREGULAR PRESENCE. THE AIM OF THIS PROJECT IS TO PROMOTE BETTER COEXISTENCE BETWEEN THESE PREDATORS AND MAN, GUARANTEEING HABITAT CONDITIONS AND COEXISTENCE WITH HUMAN ACTIVITIES.*

The LIFE LUPI LYNX project aims to improve the social and ecological conditions that will allow these two endangered species of Portuguese fauna to recover. The ecological conditions include increasing the abundance of wild prey and restoring the habitat. On a social level, the aim is to promote peaceful coexistence with local human communities, increasing the tools for preventing attacks on livestock to avoid potential conflicts. The aim is also to boost the region's socio-economic development by investing in nature-based economic activities that promote respect for the land-

scape and biodiversity. The project also aims to increase the exchange of knowledge and the capacity of local players to prevent damage to livestock and detect environmental crimes.

The area of intervention includes the entire Beira Interior region in Portugal, in the districts of Guarda and Castelo Branco, as well as the province of Cáceres, in Extremadura, Spain, covering a total of around 17,000 hectares. Working on a cross-border scale will make it possible to achieve better, more comprehensive results with a greater impact on the future of the Iberian wolf and lynx, two key species.



DANIEL GALBRAITH

The project, coordinated by Rewilding Portugal, also includes five other Portuguese organisations - BIOPOLIS/CIBIO, Grupo Lobo, the Open Science Platform of the Municipality of Figueira de Castelo Rodrigo and the University of Aveiro, and two Spanish organisations - AMUS - Asociación de Acción por el Mundo Salvaje and the Junta de Extremadura. The project has a duration of five years and a budget of around 3.5 million euros.

Its objectives are wide-ranging and multidisciplinary, and the results it aims to achieve stand out: improving the legal framework for the use of livestock protection dogs; improving the habitat and increasing the availability of prey for both wolves and lynx; using good

practices on more than a dozen private properties; increasing the use of measures to prevent damage to livestock, namely livestock protection dogs and fencing; working together with the authorities in both countries to identify and prevent environmental crimes; establishing partnerships with wildlife recovery centres and toxicological analysis laboratories; supporting and promoting sustainable nature tourism in wolf and lynx lands; holding participatory sessions with key players in the area to find positive solutions that make human activities compatible with the presence of these predators; and carrying out environmental education programmes for children and young people.



# The wild rabbit, a fundamental hero who is key to the recovery of the Iberian lynx

*AS PART OF THE LIFE LUPI LYNX PROJECT, WHICH STARTED IN 2024, REWILDING PORTUGAL AND ITS PARTNERS HAVE BEEN WORKING CLOSELY ON THE RECOVERY OF KEY PREY SPECIES, BOTH WOLF AND LYNX. IT IS ESSENTIAL TO IMPROVE THE PREY STOCK OF THESE TWO EMBLEMATIC SPECIES TO ENSURE THEIR RETURN TO THE LANDSCAPE AND REDUCE CONFLICTS WITH DOMESTIC LIVESTOCK PRODUCERS. THE RABBIT IS THE MOST FUNDAMENTAL ELEMENT IN THE IBERIAN LYNX'S DIET.*

Both the Iberian wolf and the Iberian lynx have a fundamental role to play in the Iberian ecosystem. They are the top predators in this landscape and therefore play an irreplaceable role in the trophic chain, as they are the only predators of large ungulates such as wild boar, red deer and roe deer, controlling their populations as well as those of mesopredators such as foxes. They also eliminate sick animals and consume carcasses, preventing the spread of disease, thus making a fundamental contribution to balancing ecosystems. In addition, both are responsible for establishing the so-called 'landscape of fear', as their presence forces the prey they feed on to move around the landscape, opening up clearings, creating mosaics in the landscape and dispersing seeds. These movements and their positive effects create a landscape that is more resilient to fires and

also more functional and complete with greater dispersal of flora species and more open spaces that benefit all fauna, including insects and reptiles that depend on this habitat diversification.

The wild rabbit, currently classified as 'Endangered' in Portugal, is considered a key, multi-functional species in the Iberian Peninsula's Mediterranean ecosystem, given its importance and role in it, whether as prey, as a landscape modifier or as a seed disperser. This worrying situation is mainly due to the outbreaks of myxomatosis and viral hemorrhagic disease that have plagued rabbit populations for decades; in the last 10 years a new wave of viral hemorrhagic disease has caused population declines of around 70%. Of course, their delicate situation also brings problems that extend to the species that feed on them: the Iberian lynx, of course, but also the Iberian imperial eagle, for example.



STAFFAN WIDSTRAND

Lynx can live in areas with few rabbits, especially the males, adapting to this situation by hunting roe deer, fallow deer and other small ungulates present in the landscape. But if we talk about their viability and population growth, the situation is different. For reproduction to take place, a very healthy population of rabbits is needed, a source of food that the females depend on to feed their young and for them to learn to hunt.

This means that the recovery of the wild rabbit is particularly crucial to allowing the Iberian lynx to expand in the project area, as it needs stable and thriving rabbit populations in order to settle in a new location and start reproducing.

To improve this current situation, Rewilding Portugal has been carrying out various actions on the ground as part of the LIFE LUPI LYNX project. The habitat of the prey in question (ungulates for the wolf and rabbits for the lynx) has been improved, either through deforestation, so that open areas can be created for feeding, or through sowing, so that the open areas have vegetation suitable for feeding ungulates, rabbits and partridges, for example. In addition, the restoration and construction of ponds is also essential to serve as a watering point for these same animals throughout the landscape.

In addition, a rabbit population reinforcement programme is also planned in the districts of Guarda and Castelo Branco, the two Portuguese districts covered by the project. This reinforcement is planned in partnership with local councils, private individuals and hunting areas and will involve the creation of several breeding paddocks, immunological tests to choose breeding stock with the highest antibodies to myxomatosis and haemorrhagic fever (the two main diseases that have affected the rabbit popu-

lation), genetic control to reduce inbreeding and thus increase genetic diversity, gradual releases with family groups in fenced areas for several weeks to fix the rabbits to a new location, construction of various types of ponds to understand which is the most suitable for each reintroduction area (this construction can be done using various materials: pallets, stones, buried pipes, scraps of dead wood, mounds of earth and combinations of all). In the hunting areas with which we will be working on these population reinforcements, the animals will be released in the refuge areas, i.e. the areas where no hunting takes place within these concession areas.

The project also includes constant and comprehensive monitoring of both prey and predators. Roe deer and other ungulates will be monitored using photo-trap cameras, while rabbits and partridges will be monitored using transects. Wolves and lynx, on the other hand, will be monitored using both methods.



JOÃO ALMEIDA

# Wildcat identified for the first time in a rewilding area

*ACCORDING TO THE RED BOOK OF MAMMALS, THE WILDCAT IS ENDANGERED IN PORTUGAL AND IT IS ESTIMATED THAT THERE ARE LESS THAN 100 ADULT INDIVIDUALS, AND THIS IS THE FIRST CONFIRMED RECORD FOR THE GREATER CÔA VALLEY, OUTSIDE THE SERRA DA MALCATA, IN MORE THAN 30 YEARS, ALTHOUGH THERE HAVE BEEN SOME SPORADIC UNCONFIRMED OBSERVATIONS. HABITAT LOSS AND HYBRIDISATION WITH DOMESTIC CATS ARE ITS BIGGEST CONSERVATION PROBLEMS. IN PARTS OF EUROPE SUCH AS SCOTLAND, 88 PER CENT OF WILDCATS HAVE DOMESTIC CAT GENES. WE ARE LOSING THE GENETIC UNIQUENESS OF THIS SPECIES AND URGENT ACTION IS NEEDED TO CONSERVE THIS UNIQUE ANIMAL!*

The wildcat in question was first recorded using cameratraps, but this method is not infallible in itself, as 'it is very difficult to distinguish this species from a domestic cat with a wild phenotype,' says Pedro Ribeiro, the Rewilding Portugal biologist involved in this discovery, which is why, after consulting ICNF specialists, a field survey was carried out, where it was possible to find droppings.

'When I saw the first photo of this cat, I almost jumped out of my chair! It's extremely rare to find wildcats in Portugal, and especially in the Côa region,' the biologist tells us about the first moment when the identification seemed to be confirmed, even before the genetic tests through the droppings, which would happen later. It's not uncommon to photograph domestic and feral cats in the countryside using this type of camera, as these animals can live dozens of kilometres from

the nearest human settlements and can even have a negative impact on wild populations of birds, reptiles and mammals. They also compete for territory with the native wildcat and hybridise with this species, diluting their wild genetics, especially when we're talking about an endangered species like in this case.

The droppings were then sent for genetic analysis as part of a collaboration with CIBIO-InBIO/BIOPOLIS at the University of Porto, where the CONGEN group, coordinated by Paulo Célio Alves, is carrying out a study on the genetic diversity and degree of hybridisation of the wildcat at an Iberian level. Analysing molecular markers of nuclear DNA allowed us to genetically confirm that the animal was indeed a wildcat, the first record in one of our rewilding areas in the Greater Côa Valley. One of the aims of rewilding areas is to act as refuges where wildlife can find the necessary conditions to thrive, and these findings indicate that they are indeed fulfilling this function.

The wildcat is Endangered in Portugal and it is estimated that there are less than 100 adult individuals left, a critical situation that needs to be reversed by starting to work with this species immediately. The largest populations in the Iberian Peninsula are in northern Spain, but experts are talking about a silent extinction at Iberian level, mainly in southern Portugal and Spain, but also in other regions of Europe. Habitat loss and hybridisation with domestic cats are among its biggest conservation problems. There is an urgent need to take action to recover the wildcat in the Iberian Peninsula and Rewilding Portugal will start by supporting the sterilisation of domestic cats in the vicinity of the area where the wildcat was recorded, to avoid the risk of hybridisation.





JOÃO COSME

# European bison arrive in Portugal for the first time

*A HERD OF EUROPEAN BISON ARRIVED IN PORTUGAL IN 2024 THROUGH REWILDING PORTUGAL. THIS HERD HAS BEEN DEMONSTRATING ITS FULL POTENTIAL TO INCREASE CARBON SEQUESTRATION, STIMULATE BIODIVERSITY AND SUPPORT THE GROWTH OF NATURE TOURISM, ALL ON A LARGE SCALE.*

## **Pioneering translocation**

A herd of eight European bison arrived last year in an area very close to the southern border of the Greater Côa Valley rewilding landscape. The translocation of the bison from reserves across Poland - through the Polish State Forest and the European Friends Society, and with the support of the European Bison Conservation Centre (EBCC) - was partly financed by a 71,000 euro fund from the Rewilding Europe programme, European Wildlife Comeback Fund, and also received funding from wine producer Altas Quintas. This was the first ever translocation of European bison to Portugal.

By travelling through the area where they

are usually found, the bison have been promoting biodiversity and helping the landscape to fix more carbon in the atmosphere. As large herbivores, these animals will gradually reduce the risk of catastrophic fires in the future by reducing flammable vegetation, creating natural firebreaks and opening up forest areas, which allows more light to enter and grass to grow instead of scrub. Outbreaks of catastrophic fires are becoming increasingly common in Mediterranean regions as climate change leads to more extreme temperatures. This problem is exacerbated by the fact that bushes are invading areas where livestock have disappeared as a result of rural depopulation.

### A progressive pilot-test

The European bison, now accompanied by the Rewilding Portugal team, has been adapting to this new reality and landscape and in the future there is the aim of making it possible to visit it, through the Wild C a Network and its operators, who are trained for this type of wildlife observation visit.

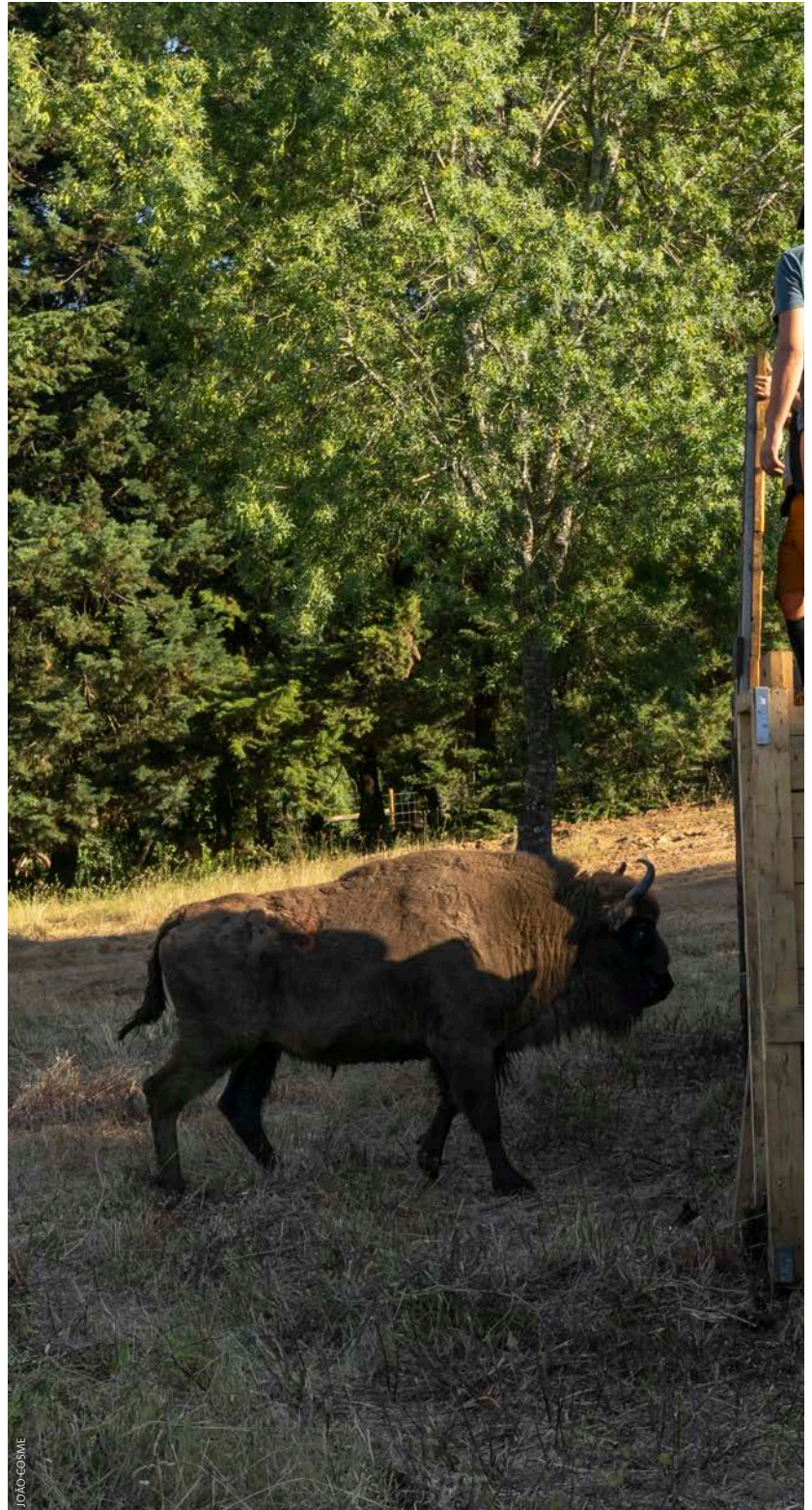
'We see this translocation as a pilot test,' explained Rewilding Portugal team leader Pedro Prata. 'The bison are being closely monitored to see how they adapt to the local landscape and climate. This is the first time the Rewilding Portugal team has managed bison, so it's a learning process for us too. The team members have been receiving constant training in bison management.'

### The European bison: a hero of the climate, biodiversity and the community

As a key species and emblematic of the rewilding movement, the European bison has the potential to be a climate and biodiversity hero. This is one of the reasons why the current return of this influential herbivore to European landscapes is so important, along with efforts to support population growth.

Through grazing, foraging, trampling and fertilisation, bison help maintain biodiversity-rich landscapes, made up of mosaics of forests, scrub

and grasslands, as well as numerous micro-habitats, which are home to a wide range of plant and animal species. This has been emphasised by studies carried out in Europe, as well as in North America, in relation to the American bison, which is similar to the European bison. These same interactions can increase carbon capture in both vegetation and soil, and carbon is also stored in the bodies of the bison themselves. By supporting the growth of nature-based tourism, European bison can also be community heroes.



### Historical context

The literature states that the European bison may not have been recorded naturally on the Iberian Peninsula, although there have been some recent studies pointing to this reality. What is certain is that remains of the now extinct steppe bison - from which all living bison today are descended - have been recorded in the region. The steppe bison became extinct around 10,000 years ago, after the last ice age, but the European bison - which coexisted with the steppe bison for tens of thousands of years in Europe - spread eastwards across Europe, as far as the Volga river and the Caucasus mountains. On the Iberian Peninsula, the European bison fulfils a similar ecological function to the steppe bison, and recent studies have shown that the species is adapting well to the Mediterranean climate

in Spain, where it has already been introduced.

European bison have been driven to the brink of extinction by hunting and habitat loss. When the last wild European bison was slaughtered in the Caucasus in 1927, there were only 54 European bison left alive, all in captivity. Thanks to conservation efforts, the species has since made a remarkable comeback. In the last decade, the number of European bison has increased from just over 2,500 to around 9,000 individuals.

Rewilding Europe's efforts have enabled the establishment of European bison populations in Romania's Southern Carpathians and Bulgaria's Rhodope Mountains. They are also supporting their return to the Oder Delta (Germany and Poland), three rewilding landscapes spread across Europe within the network of which we are part at European level.





# Study dives into the history of fire in the Côa Valley in and points that holistic approaches are needed to minimize wildfire risk

*PUBLISHED IN THE SCIENTIFIC JOURNAL FIRE ECOLOGY, IT LOOKS AT WHAT ARE THE VARIABLES ASSOCIATED WITH WILDFIRE OCCURRENCE IN THE GREATER CÔA VALLEY IN THE PERIOD OF 2001-2020. THIS STUDY GIVE MORE INSIGHTS ABOUT FIRE HISTORY AND RISK FACTORS, SHOWING THAT EFFORTS TO REDUCE THE RISK OF CATASTROPHIC WILDFIRE OUTBREAKS IN MEDITERRANEAN REGIONS COULD BENEFIT FROM A MORE HOLISTIC APPROACH TO LANDSCAPE MANAGEMENT THAT TAKES ACCOUNT OF VARIOUS ECOLOGICAL, SOCIO-ECONOMIC, AND CLIMATIC FACTORS. REWILDING CAN HAVE A KEY ROLE TO PLAY IN SUCH AN APPROACH.*

## **Wildfires on the rise**

In many landscapes, naturally occurring wildfires can support biodiversity, regulate nutrient flows, and maintain habitats. However, climate change is increasing the incidence of catastrophic wildfire, which can have a devastating impact on wildlife, property, and people.

Rising temperatures and longer and more intense periods of drought mean such fires are burning more frequently, quickly, and fiercely, and for longer. Many parts of Europe are at risk, particularly those in Mediterranean regions. In 2023, an area around twice the size of Luxembourg burnt in the EU, amounting to more than half a million hectares.

Climatic factors are only one reason why the risk of catastrophic wildfire in Mediterranean regions is increasing. Many of these regions have experienced rural depopulation and land abandonment for many years. As people have left the land, so grazing livestock numbers have plummeted. With the diversity and abundance of free-roaming wild herbivores such as deer and ibex unnaturally low or absent in many areas, a lack of any kind of grazing means landscapes are increasingly covered by young, often monotonous forest or dense scrub. The proliferation of such flammable vegetation, coupled with the close plantation of pine and eucalyptus trees, leaves such landscapes increasingly susceptible to wildfire outbreaks.



### The human factor

The paper reveals that only 2% of fires in the Greater Côa Valley region start naturally. Of the 89% of fires in the Greater Côa Valley region caused by humans, two-thirds are caused by negligence, which include fires pasture, as well as burning crop residues or working with machinery in hot days without authorisation. Pastoral burning is a technique that has been historically used in the valley to clear the land and fertilise it for grazing with sheep and goats. The authors found that areas where sheep were grazed at higher densities were more likely to burn than other areas, which could be linked to such practice, which continues today. On the contrary, areas grazed by cattle were not found to be likely to burn more frequently because pastoral burning is not used.

The researchers also found that in 20 years 78% of the areas have burned twice and that with some areas showing an average frequency of large fires in the Greater Côa Valley once every six years. If fires burn too frequently – which is a problem in many parts of Portugal – then the ecosystem has no time to regenerate and evolve into a more mature landscape where fire-prone shrubs are the most dominant type of vegetation. This can effectively lock the landscape into a cycle of burning.

### The importance of grazing management, protected areas and rewilding

Grazing by domesticated livestock has been put forward as a means of reducing wildfire risk, and is supported as such by subsidies in Portugal and across Europe. However, the results of the study show that, with the spatial and temporal resolution analysed, livestock density was not associated with lower fire risk. The effectiveness of grazing practices in wildfire prevention is influenced by how those livestock are managed. When grazing mimics natural dynamics, with a diversity of species of herbivores grazing in large areas and consuming not only grassland but also woody material, they have more impact in fire prevention. Livestock systems in small parcels sustained regularly with supplementary feeding have limited impact. This difference underscores the unique ecological benefits of rewilding and the role of wild and semi-wild herbivores in creating more fire-resilient landscapes.

The research team also found that there was a 15% lower probability of fires breaking out in protected areas, including Natural Parks and private protected areas such as the rewilding areas managed by Rewilding Portugal. This may relate to reduced public access and restrictions on land use, as well as surveillance by Rewilding Portugal's rangers in areas that are being rewilded.

### An integrated approach

Moving forwards, ongoing climate change means the risk of catastrophic wildfire outbreaks in Mediterranean regions will almost certainly increase – particularly on abandoned rural land.

The study indicate that grazing by domesticated livestock – on its own – may not be an effective solution depending on how livestock are managed in . A more holistic landscape management approach addressing the social causes of wildfires and land management is fundamental to reduce the number of ignitions and fire risk. Protected areas and natural based solutions to manage land can play a role in this reductions. Education, increasing public awareness, and restricting access to fire-prone areas during the fire season could also be important tools for reducing the risk of fires in rural areas.

In the Greater Côa Valley, the Rewilding Portugal team are addressing the social dimension of wildfire outbreaks by rewilding marginal land, and promoting social and economic activities based on it. They are also hiring local people to help with fire surveillance, while recognising the role of shepherds working on land adjacent to rewilding sites as stewards of the land.





# ‘Wilder Côa’ premiered in 2024 to a full house and much applause

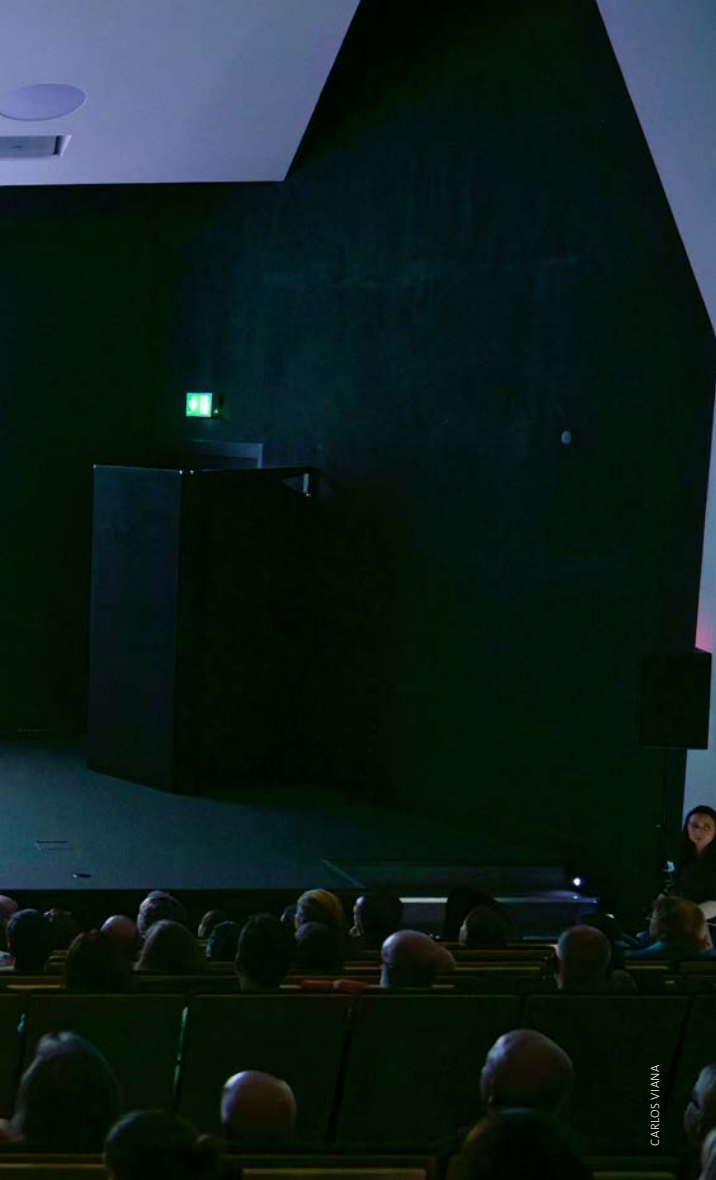
*LAST YEAR, THE NATURE DOCUMENTARY ‘WILDER CÔA’ PREMIERED IN A DOUBLE DOSE AT PAVILHÃO DO CONHECIMENTO IN LISBON. THE FILM, DIRECTED BY JOÃO COSME AND NARRATED BY ANA VARELA, REVEALS THE NATURAL HERITAGE OF THE GREATER CÔA VALLEY, REWILDING PORTUGAL’S REWILDING EFFORTS ON THE GROUND AND THE WILD AWAKENING OF THIS LANDSCAPE IN RECENT YEARS.*

## **The wildest side of Portugal**

The wilder side of Portugal has arrived in Lisbon, with the Greater Côa Valley and the rewilding efforts carried out by Rewilding Portugal in this landscape being highlighted with the premiere of the nature documentary ‘Wilder Côa’, a 55-minute film that follows the journey of the Côa River in its entirety, revealing species, behaviours, coexistence, functionality and the entrepreneurs who support and leverage this project. A great wildlife

corridor that has been given new life over the last five years and is already looking to the future.

A 55-minute film directed by João Cosme, a specialist in this segment, produced by Rewilding Portugal, with Fernando Teixeira as production director and narrated by nationally recognised actress Ana Varela, a clear supporter of this initiative from the outset and who has worked with Rewilding Portugal on several occasions in the past.



### Full house and renewed hope

The premiere took place on the evening of 22 November at the Pavilhão do Conhecimento in Lisbon, and the turnout couldn't have been more positive. Places sold out on the very day the event was open for registration, with more than 200 people attending to watch the big moment. The event began with an extensive tasting of local products from the Greater Côa Valley region, produced by members of the Wild Côa Network, a nature-based economic development project managed by Rewilding Portugal in the region and now with its own brand, where everyone had the opportunity to learn more about the work of these small local producers who are supporting a positive coexistence with wildlife and boosting nature-based tourism in the territory where Rewilding Portugal operates and in line with its values and implemented measures.

The film was then shown to the audience, both national and international, who had come on purpose to watch this moment. The feedback was extremely positive, with a heartfelt and lengthy round of applause as soon as the

lights came back on, which was then extended with Rewilding Portugal's tribute to João Cosme and Ana Varela, calling them on stage to award them with the official poster of this event that was so special to both of their journeys. At the end, there was also a round table discussion on 'The evolution of rewilding in Portugal over the last 5 years and the future', with Pedro Prata (executive director of Rewilding Portugal), João Cosme (nature filmmaker and director), João Soutinho (president and co-founder of Verde) and Pedro Rocha (administrator of Herdade da Contenda), moderated by Ana Noronha, a member of the board of the Ciência Viva Centre.

### What's next for this 'Wilder Côa'?

This documentary will now be travelling around Portugal and abroad. In 2025, there will be several screenings in Portugal and abroad, with more than ten planned, some with locations and dates to be announced soon. It won't be available digitally, but these screenings will be extended and spread throughout Portugal to enable it to reach as many interested viewers as possible.

# Interview with João Cosme, the person behind the cameras in “Wilder Côa”

*HE IS THE DIRECTOR OF ‘WILDER CÔA’, WHICH IN 2025 IS TOURING THEATRES ALL OVER THE COUNTRY. IN THIS INTERVIEW, HE EXPLAINS THE WORK HE HAS PUT IN OVER THE LAST YEAR AND A HALF TO MAKE THIS PROJECT POSSIBLE AND NOW PRESENTABLE IN THEATRES, SHOWING HIMSELF TO BE PROUD AND SURPRISED, EVEN IN A GOOD WAY, BY ITS STRONG ACCEPTANCE.*

**‘Wilder Côa’ is most likely your main production in nature cinema so far. How would you describe this project to us?**

It was undoubtedly an exciting project, with numerous stages, some difficulties but, above all, a great challenge to achieve the desired results, both for me and for Rewilding Portugal. As well as having a script to follow in detail, it takes a lot of planning but above all a lot of commitment, in a fabulous area with a rich natural heritage. Although I have known the area for many years, I was surprised by a simply wild area with great natural potential and unique places full of great beauty..

**A nature film has many specific characteristics. More time in the field, highly subject to the unpredictability of wildlife and the weather, with ‘actors’ who don’t always co-operate at the speed we want, as is the case with wildlife. Can you tell us a little about the main challenges involved in making a film in this segment?**

The biggest challenge in making a nature documentary, especially with wild species, is the time we may need to achieve what we

want. For example, having a sequence of an animal can take weeks or months. It requires planning and, above all, a good knowledge of the behaviour of our ‘protagonist’, its habits, etc. Then it’s a process that can be long, but it all depends on the species we’re working with.

**What do you enjoy most about the whole process? You always say you love what you do, but what is it about all the field work, editing, production, editing that makes your eyes light up the most?**

There are countless joys I have from carrying out this work. There’s no doubt that being in the field and witnessing up close the unique behaviour of the wild creatures we’re photographing or filming is something extraordinary. For example, being in a shelter for hours and having the opportunity to ‘enter the privacy’ of a wild species is thrilling. Sometimes I spend minutes just watching the animals while I’m filming, just for the beauty they convey to me. Of course, then all the other processes are enticing. I think that when you see the editing and montage methodology having a common thread and you see the positive results, it’s gratifying.

**This film will probably have a special place in your career so far, not least because of the huge scale of this project. What has it been like to be recognised by both the public and your peers? Did you expect all this involvement around this film?**

It’s always good to know that our work has achieved the results we initially thought and wanted. Then all the involvement you’re getting is also due in no small part to the communication and promotion that Rewilding Portugal carries out with precision and great skill. The results and the sold-out rooms surprise me. It’s simply gratifying to see this work recognised.



**The film is now touring nationwide, with more than 20 screenings planned in 2025 alone. We're talking about thousands and thousands of people who are looking for a chance to see this film in the theatre. How do you see this project growing in theatres? Is it important to see that a film of this nature has already managed to sell out successive theatres in Portugal in this way?**

Unfortunately, in Portugal we don't have the habit of seeing these nature films in large cinemas, as we do in some European countries. Frankly, I'm surprised by the turnout, which shows that there is interest in these themes related to nature conservation. With these screenings, we can convey a stronger message and sensitise the public to the importance of wild territories and species in a different way.

**Being shown on television will also become a reality. This is a space that very few films in this segment in Portugal have managed to achieve, but which 'Côa Mais Selvagem' will now have. To what extent will this also give you another projection? Reaching a significant slice of the Portuguese population in such a direct and close way?**

Being shown on television is always very positive, as we can reach a diverse public and probably reach a very significant audience. It's an opportunity to promote a fabulous region and the work of Rewilding Portugal. A large part of the Portuguese population is unaware of our country's natural values. A film like this being broadcast on television will certainly be an asset in promoting this rich territory.

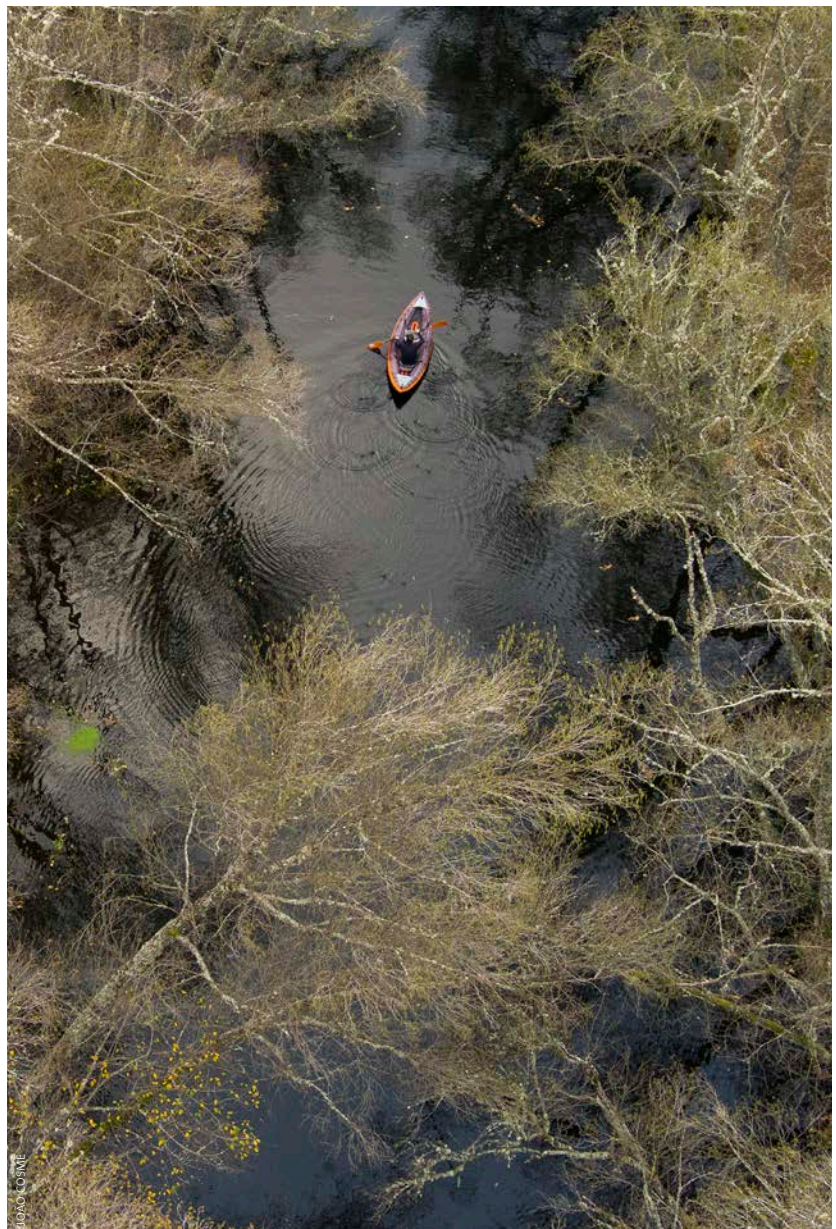
**Your connection to rewilding and the work of Rewilding Portugal is growing stronger and you've been following the organisation's work continuously for many years. What are you most like? What fascinates you most about this work?**

Ever since I started working with Rewilding Portugal, I've been pleasantly surprised by their dynamism and the work they're doing on the ground, in this case in the Greater Côa Valley. All the projects they are involved in, some of them sensitive but of enormous relevance, as was the case with WolFlux, are extremely important. Involving people, providing solutions to minimise conflicts... will be the key to a healthier coexistence, I think this kind of work is fascinating and very important.

**Of course, your work doesn't end here and there are more projects to take on. Can you tell us about any of them now? Of course, apart from the Rewilding Portugal work, which you will also continue to follow in a professional capacity.**

I'm in the planning phase for new projects and one of them will again be related to the Côa Valley, but covering the whole Riba-Côa area and very much focused on the natural world,

with scavenging birds as the main protagonists. It's an exciting project, showing a little of the life of vultures and also their importance in an ecosystem. At the moment I'm already in the field filming, but we're at the stage of raising financial support, which is always a problem.





RUBEN CARVALHO

# Wild Côa Network growing and with new dynamics

*MORE THAN FOUR YEARS AFTER ITS OFFICIAL LAUNCH, THE WILD CÔA NETWORK NOW HAS SIXTY-FIVE COMPANIES AND BUSINESSES AS MEMBERS AND 2024 WAS A YEAR OF SOLIDIFYING THE WORK ALREADY DONE, ESTABLISHING NEW DYNAMICS AND MAKING AN EVER GREATER CONTRIBUTION TO ATTRACTING TOURISTS TO THE WILDEST SIDE OF PORTUGAL.*

Conceived in 2019 and officially launched to the public in 2021, the Wild Côa Network has been increasingly consolidating itself in the national and international market in the nature tourism segment, currently attracting more than 15,000 tourists to the Greater Côa Valley territory every year, and becoming increasingly representative in the regional economic sector and in the nature tourism panorama at national level and also abroad, with partic-

ipation in various fairs and events and with the development of new internal dynamics.

The launch of the Visit Greater Côa Valley brand, to promote the touristic offer of this network and of Rewilding Portugal itself and its rewilding areas open to visitors, among other services, has also greatly boosted this growth, creating standardised communication to the outside world that has attracted more capacity to receive and also to communicate the offer available in an integrated way.



The Wild Côa Network currently has 65 members, who already represent the various municipalities in the region fairly equally and are divided into four distinct sectors: restaurants and catering; visitation (nature guides, historical interpreters and museums); accommodation and local endogenous products. A network that in recent years has facilitated synergies between these companies from different sectors, fostering a stronger business environment that encourages co-operation rather than competition; promoting the region and all the potential of its natural and cultural values together; supporting these local companies in developing more sustainable business models and offers in line with the principles of rewilding; and also promoting broad, integrated partnerships that have made it possible to launch more than ten joint tourism packages. The success of the launch

of these packages was remarkable and in 2024 alone, after their launch, seventeen rewilding experiences were carried out in the territory.

Every year, at the end of each year, Rewilding Portugal has carried out a satisfaction and impact survey of its Wild Côa Network project, collecting responses from its members. This survey seeks to gauge the level of satisfaction of the members who take part in this project in relation to their participation, to measure qualitatively and quantitatively the impact that belonging to this network has on these members and also, financially, the impact on the ground felt by these members, through various indicators and metrics. In addition, this report also focuses on projecting the future of the network in a participatory way, asking the members themselves for ideas and suggestions for actions and initiatives so that they can be taken into consideration for the next year's strategy.

The results for 2024 are more encouraging than ever. All the indicators have seen significant positive increases and the impact of this networking is increasingly being felt in the region: both in the increase in demand and in the ability to respond in quantity and, above all, in quality. However, there are still challenges to tackle that are common to the whole region: very short average nights per stay (1.5 to 2 nights per guest); high seasonality, with a lot of demand in the spring/summer period that doesn't continue in other months; and average occupancy rates that generally don't exceed 40 per cent. The Wild Côa Network has jointly created strategies every year to combat this irregular demand, which is too concentrated at certain times of the year, and this is one of the main objectives for the network in the coming years.

One of the main analytical components of this survey centred on gauging how satisfied the members were with belonging to this project. A business network such as this one has the clear objective of increasing networking and partnership between various organisations which, although they share the same territory and often clients, do not yet have an integrated offer that would allow them to collaborate more assiduously. At the moment, all the members consider that belonging to the network has considerably increased this work in collaboration with other companies that



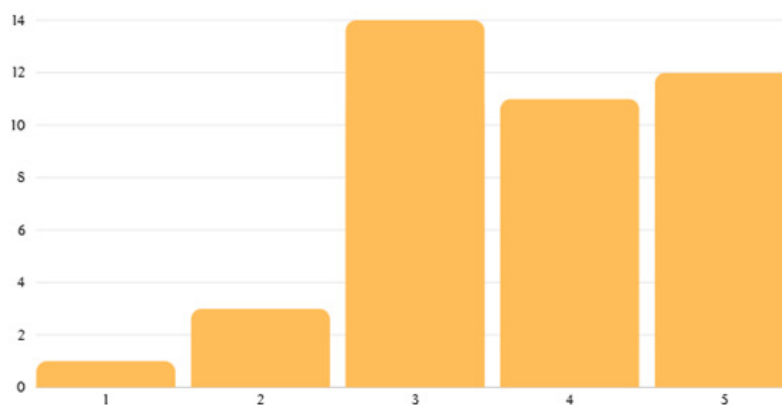
are also members. What's more, belonging to this network can also bring wider benefits to the performance of these companies and their more direct growth. 57.6% of the members say that joining this project has allowed them to access new markets and 36.3% of the members confirm that it has even allowed them to access new lines of funding to continue their projects.



The impact is also becoming more and more noticeable in terms of increased demand for nature tourism in the region. In 2023, 68 per cent of members had noticed this increase in demand in general, while in 2024, 82 per cent have already noticed this positive impact, with almost 50 per cent of them also saying that this region-wide increase is already being felt directly in their business.

Another great benefit of belonging to the Wild Côa Network has been the possibility of accessing different training programmes completely free of charge. There is a clear objective and commitment on the part of Rewilding Portugal, as the manager of this network, to empower these companies and entrepreneurs with new tools and knowledge that can increasingly improve the quality of their services and products, thus also guaranteeing an increasingly high-quality experience for those who visit the territory. By the end of 2024, more than 27 per cent of members had already benefited from some kind of training of this kind, and so far all the training carried out has been geared more towards nature guides. In 2025, this training process is being continued, with at least three trainings planned in a wide variety of areas, from sustainability to rewilding or even plant-based cooking.

Another of the main objectives of this networking is to ensure that these businesses' commitment to nature-based projects that contribute directly and indirectly to its conservation and restoration also brings them added-value economic benefits that guarantee their stability and growth. In 2023, when members were asked to what extent joining the Wild Côa Network had increased their business flow, only 31 per cent said they had noticed a significant increase. In 2024, the figure was already 51.5 per



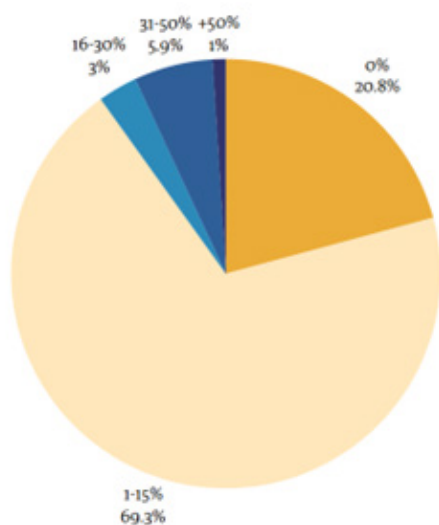
"A adesão à rede tem aumentado o meu fluxo de negócios" de 1 a 5

cent, which is an increase of more than 20 per cent in this perception, and which demonstrates the positive evolution that this project has had and that it has gained a lot more relevance on the local and national scene over the last year.

This increase is clearly reflected in the fact that more and more of these businesses are receiving more clients directly and indirectly, both from Rewilding Portugal itself and from other members of the network who refer them. In 2024, 62.5 per cent of members received clients directly from Rewilding Portugal (up from 34 per cent in 2023, doubling in just one year) and 45 per cent received clients from other members of the network (up from 37 per cent in 2023). This increase in customer targeting from other members and from Rewilding Portugal has also translated into a strong increase in profit because of this. In 2024, all the members who responded to the survey revealed that they had received a total of 34,280 euros from Rewilding Portugal or other members of the network. This figure is much higher than in 2023, when it totalled 21,700 euros.

At the moment, the amount that each member receives directly or indirectly from Rewilding Portugal and other members represents between 1 and 15 per cent of their total turnover, with 69.3 per cent of members falling into this percentage range. In addition, 9.9 per cent say that in their case it is even more than 16 per cent of their turnover, a considerable slice of their annual turnover.

In 2025, this project is expected to grow even more. It is now entering a phase of maturation that will allow it to consolidate many existing ideas that have been taking shape in recent years and are now being implemented, most of them involving several members at the same time, thus boosting synergies that give scale and visibility to the Wild Côa Network as a whole. Portugal's wildest side is ready to welcome you, come and visit it with us!



Turnover in total percentage representing clients coming directly or indirectly from Rewilding Portugal and other members of the network

# Our first wildlife observation hide inaugurated

*REWILDING EFFORTS ARE SUPPORTING THE RECOVERY OF WILDLIFE IN PORTUGAL'S GREATER CÔA VALLEY. THE FIRST OF A NETWORK OF WILDLIFE OBSERVATION HIDE OPENED IN 2024 IN THIS LANDSCAPE, PROVIDING VISITORS WITH AN INTERESTING WINDOW INTO THIS RECOVERY AND SUPPORTING THE DEVELOPMENT OF NATURE-BASED TOURISM.*

## **An exciting step forward**

Fancy shooting a stunning image of a majestic black stork or a dazzling European bee-eater? How about a close encounter with an otter or European pond turtle? Wildlife enthusiasts and nature lovers will be delighted to hear that Rewilding Portugal has just opened its first wildlife watching hide in the Paul de Toirões rewilding site, on the eastern edge of the Greater Côa Valley rewilding

landscape, between Almeida and Sabugal.

The opening of the hide is great news for the local nature-based economy, with more hides set for construction in Paul de Toirões, and across Rewilding Portugal's other rewilding sites. These will all be accessible through services offered exclusively by members of the Wild Côa Network – a thriving nature-based business network set up by Rewilding Portugal in the Greater Côa Valley in early 2021. A percentage of every hide booking fee will be used to support ongoing rewilding efforts.

"This is a hugely exciting step forward for rewilding and nature-based tourism in the landscape," says Rewilding Portugal team leader Pedro Prata. "This hide and the ones to follow will allow visitors to witness first-hand the ongoing wildlife comeback that our rewilding efforts are supporting. They will help people to reconnect with the wild, promote rewilding, and enable local businesses and communities to benefit financially from nature recovery."

## **A flourishing site for wildlife**

The Rewilding Portugal team are establishing a growing number of rewilding sites within the Greater Côa Valley, as they develop a 120,000-hectare wildlife corridor to connect the Malcata mountain range in the south with the larger Douro Valley in the north. As ecological stepping stones, these sites enhance landscape connectivity. They also act as refuges where a diverse range of wildlife species can recover and thrive.

Rewilding Portugal's efforts to restore Paul de Toirões – a site which was once heavily mined – began in 2022. Many of the excavations here have filled with water, creating a complex of lagoons, channels, and ponds that are home to a burgeoning array of resident and migratory wildlife species. The acquisition and protection of the site means wildlife here is no longer disturbed by people hunting and fishing, or by livestock, which means birds and mammals are becoming less elusive and easier to see.



DANIEL ALLEN

### Views to a thrill

The Paul de Toirões hide offers a privileged and unrestricted view of a lagoon where many birds from the Greater Côa Valley and farther afield are either resident or stop by. “The new hide, which is focused primarily on aquatic bird species, is opening in time for the final summer migration,” explains Pedro Prata. “We are seeing an increasingly diverse range of birds use the oasis of Paul de Toirões as a place to recharge while they are on the move.”

“Paul de Toirões is a really interesting and tranquil rewilding site,” adds Fernando Romão, owner of wildlife-watching company Wildlife Portugal, which as a Wild Côa Network business will manage the hide under an agreement signed with Rewilding Portugal. “The hide offers visitors, who will be accompanied by one of our guides, the opportunity to observe and photograph birds comfortably, in a way that avoids disturbance. Key species include black storks, marsh harriers, and kingfishers, while we’ve also seen otters passing through.”

### Scaling up and booking your experience

Moving forwards, four more hides are slated for construction in Paul de Toirões. When the entire hide network is operational by the summer of 2025, multi-day and night hide experiences will be offered. The knowledge and expertise gained from building and managing these hides will be invaluable as Rewilding Portugal looks to develop wildlife watching at other Greater Côa Valley rewilding sites. All of the hides will be rented to Wild Côa Network members such as Wildlife Portugal, with the prof-

its used to develop further hides and nature-based tourism infrastructure in the landscape.

The first Paul de Toirões wildlife watching hide is now open and available for booking, for groups of between one to six people. It can be booked through either Rewilding Portugal or Wildlife Portugal. The Wildlife Portugal website provides more information about the hide experience and location, recommended clothing, equipment, and local accommodation, and equipment hire, as well as outlining rules for hide usage.



# Interview with Telma e Xavier, Quinta Vale do Tourão owners

*THEY WERE IN FRANCE BUT RETURNED TO THE GREATER CÔA VALLEY, ATTRACTED BY ITS TRANQUILLITY AND THE STRONG ROOTS THAT BOUND THEM HERE. THEY TOOK OVER TELMA'S FAMILY FARM AND HAVE BEEN DEVELOPING AND VARYING THEIR ENDOGENOUS ORGANIC PRODUCTION, COEXISTING WITH WILDLIFE AND USING INNOVATIVE AND LESS INTENSIVE PRACTICES. FIND OUT MORE ABOUT THIS COUPLE AND THIS PROJECT!*



**Introduce us to your project and the various products you currently have available for sale to the public, as well as the services/workshops you offer.**

For me, Telma Lourenço, Quinta Vale do Tourão has always been in my best memories. I always saw my grandfather and father herding the sheep on the farm in Figueira de Castelo Rodrigo. I grew up with the fascinated gaze of a child who just wanted to smile at life and experience the dazzling colours that I discovered as I ran around. After ten years in France, in 2020 my husband, Xavier Mendo, and I decided to return to Portugal and turn Quinta Vale do Tourão into our enchanted valley. As I'm the third generation of a family of sheep's milk producers, I thought I couldn't abandon this path, not because I had to, but because I liked it, to continue a legacy that made so much sense to my heart. That's when I decided to create our sheep's milk soaps, and thus pioneer the transformation of sheep's milk into soaps in Portugal. In this way, I want to promote livestock farming and the region, and in addition, sheep's milk soaps have numerous benefits for the skin.

Quinta Vale do Tourão is a 38-hectare farm. Our main crop is our 10-hectare organic almond grove, which we then transform into various products. We also have other crops such as an olive grove with 5 hectares, hazelnut trees with 2.5 hectares, vines with 1.2 hectares and a small area dedicated to the production of dried flowers. On the farm we rely on my parents to help us with whatever we need. Our animals are undoubtedly the centre of attention, not least because our family is made up of our sheep, Mirandese donkeys, ponies, dogs and our kitten, who is the most rebellious on the farm. And of course not forgetting all the fauna and flora that live there. On the farm we preserve two indigenous Portuguese breeds, the Churra Mondegueira sheep and the Mirandese donkey. We also organise several visits to the farm, workshops on producing handmade sheep's cheese and socialising with the Mirandese donkeys. We also currently have an almond and olive tree sponsorship scheme.



**Looking at the Wild Côa Network project, which has been solidifying over time, how do you see the added value that this network can bring to your business and to the region?**

The Wild Côa Network is very important for the region, as well as for all the members who are part of the network, it is an asset for all of us. This way, more people can get to know our work and have a unique experience of authentic tourism, having a real direct experience with us, getting to know the Great Côa Valley, its fauna, flora and people! A lot is being done and the road is there to be travelled.

**You have carried out numerous services and collaborations with Rewilding Portugal and other members of this network. How do you view this growing collaboration?**

Networking is what makes the most sense to me, all of us members can only gain from this important mutual sharing. Each one of us can add something incredible to the territory, and it's the combination of these synergies that makes this region so rich. And fortunately that's what's happening more and more.

**Speaking of sustainability and positive practices of coexistence with wildlife and the use of natural materials, what are the main practices that you already carry out on your farm?**

At our Quinta we place a lot of importance on sustainable practices, in fact all our produce is organically grown. Our irrigation system is solar, and we only water the trees in the hottest months to avoid water stress on the plant and thus its death. We also use our sheep's wool to build drains in the farm instead of buying geotextile, a more effective, long-lasting and sustainable solution. When it comes to coexistence with wildlife, it happens naturally; every species is essential and important in the ecosystem.

**The return of certain species of wildlife to the region can of course bring challenges of coexistence with local producers with livestock, as is the case with you. How do you view this possibility? Do you believe it's possible to coexist in a positive way?**

Only time will tell about the challenges. But yes, we hope so, to live in coexistence. That they can all coexist in harmony. They are all essential and important, each with their own characteristics, but all very important. Of course, we have to take care, such as good fencing where animals are and livestock guarding dogs. But we believe that coexistence is possible.

**Already this year, 2025, you received a visit from Rewilding Europe to take part in a pilot project to develop a booking platform for rewilding and nature experiences across Europe. How do you feel about this opportunity and how do you see the possibilities it opens up for the future?**

We're very excited and ready to welcome anyone who wants to have an authentic experience. We see this initiative in a beneficial light, because this platform makes our work known to an audience that wouldn't otherwise be aware of our work. It's very positive.





FRANK LIU

# Interview with Conceição Matos, Planalto Dourado manager

*PLANALTO DOURADO HAS BEEN A MEMBER OF THE WILD CÔA NETWORK FOR SEVERAL YEARS AND, BEING LOCATED IN THE MUNICIPALITY OF PINHEL, IS ONE OF THOSE THAT HAS EXPERIENCED THE EVOLUTION OF REWILDING PORTUGAL'S PRESENCE ON THE GROUND MOST CLOSELY, EVEN THROUGH ITS OWN LOCAL ACCOMMODATION. CONCEIÇÃO MATOS TELLS US MORE ABOUT THIS PARTNERSHIP AND THE THREE CURRENT COMPONENTS OF HER BUSINESS: AGRICULTURAL PRODUCTION, ESSENTIAL OILS AND TOURISM.*

**Introduce us to your project, as well as the various products you currently have available for sale to the public and the other services you also offer.**

Planalto Dourado is a company founded in 2004 from a traditional farmhouse in Beira Interior. The company's mission is sustainable development at an economic, heritage and environmental level, and promoting employment in a disadvantaged region. We currently have three lines of business that take advantage of our heritage: agricultural production transformed into extra sweets or other prepared foods, the cultivation of endogenous aromatic plants for transformation into essential oils and tourism. We've tried to combine the traditional with the modern and have reproduced some typical Beira Interior sweets such as sour cherries, pumpkin with almonds, blackberries and cherries, but we've also innovated by introducing other elements,

as can be seen in Esmolfe's bravo apple jam with ginger, rhubarb jam and jalapeno peppers, both of which we grow ourselves. Our centuries-old house, where we use the three old shops of olive oil production, firewood and rye for guest rooms with the possibility of visiting our fields, is an example of what a differentiated offer can be..

**Looking at the Wild CÔa Network project, which has been solidifying over time, how do you see the added value that this network can bring to your business and to the region?**

The Wild CÔa Network has played an enormous role in preserving the environment by guaranteeing the maintenance of the natural ecosystem in the region, establishing links and synergies between the various economic players, who have traditionally been isolated, as well as raising awareness of sustainability and boosting the region in terms of its high-quality products and nature tourism.



FRANKLIIU

**You've been working ever more closely with Rewilding Portugal, which has represented the region's endogenous products, as well as your own, at national and international level. How do you view this growing collaboration?**

Rewilding has done a great deal to promote our products, providing us with a website to commercialise them, promoting them at trade fairs and therefore projecting them across borders. It is a serious organisation committed to the success of its partners. For us, it's an excellent distribution channel that we want to continue to nurture and grow with.

**Is nature-based tourism the future of tourism and the attractiveness of the Greater Coa Valley as a region?**

The preservation of a region in terms of fauna and flora is undoubtedly a huge opportunity for nature tourism. However, in addition to the preserved area, the Greater Coa Valley has large agricultural territories, excellent products and a vast historical heritage that allows us to combine nature tourism with cultural and gastronomic tourism. Our secular house and farm is an example of what a differentiated offer can be.

**As a business established in the municipality of Pinhel, have you noticed any differences in the attractiveness of the municipality since Rewilding Portugal arrived in the area? New dynamics, more tourists coming from abroad?**

Rewilding Portugal has been tirelessly publicising our heritage and nature and this has been reflected in more tourists coming to the municipality, as well as more hotel and catering businesses. There is undoubtedly a better dynamic every day.



RUBEN CARVALHO



JOÃO RODRIGUES

# 4th Rewilding Photo Contest repeated and extended success

*THE REWILDING PHOTO CONTEST, ORGANISED BY REWILDING PORTUGAL, IS ONE OF THE MOST IMPORTANT NATURE PHOTOGRAPHY COMPETITIONS IN PORTUGAL, ESPECIALLY SINCE IT BEGAN TO BE HELD IN PARTNERSHIP WITH NATURCÔA, THE MUNICIPALITY OF SABUGAL. LAST YEAR, THE PRIZES FOR THE FOURTH EDITION WERE AWARDED, WITH MORE THAN 2,000 EUROS BEING HANDED OUT IN ALL CATEGORIES. JOÃO RODRIGUES, HUGO AMADOR, RENATO LAINHO AND GILBERTO PEREIRA WERE THE BIG WINNERS.*

The main aim of the Rewilding Photo Contest is to promote Portugal's natural heritage and its respective enhancement and protection, through nature photography as a means of publicising the magnificent ecosystems and respective species of wild fauna and flora that we have in our country. In 2024, its fourth edition took place

and the awards ceremony was once again part of the Naturcôa programme in Sabugal.

The competition was once again divided into four different categories: Fauna; Flora and Fungi; Landscapes with natural habitats and also Young Photographer (young people up to the age of 25), and this year saw a record number of entries, with almost 500 photographers taking part.

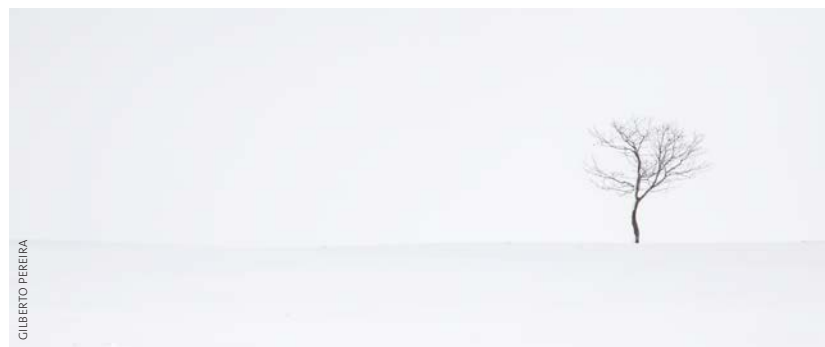
And these were the big winners: FAUNA CATEGORY - 1st place Renato Lainho; 2nd place Marco Neves; 3rd place Hugo Marques; FLORA AND FUNGUS CATEGORY - 1st place Hugo Amador; 2nd place Pedro Bernardes; 3rd place António Coelho; NATURAL LANDSCAPES CATEGORY - 1st place Gilberto Pereira; 2nd place Pedro Esteves; 3rd place Carlos Calretas; YOUNG PHOTOGRAPHER CATEGORY - 1st place João Rodrigues; 2nd place João Miguel; 3rd place Gil Frias.

The prizes awarded were as follows: 1st place - 250 euros; 2nd place - 150; 3rd place - 75 euros. They also all received a bottle of Altano Rewilding and a Rewilding Portugal magazine, as well as an award that each year takes the form of a different emblematic species from the Greater Côa Valley region. Last year it was the Iberian lynx and this year it was the Egyptian vulture.

Honourable mentions were also awarded



HUGO AMADOR



GILBERTO PEREIRA

to the following photographers: Bruno Rafael, Pedro Lemos (2), Cátia Gamito, Marco Atraca, Mário Cunha, Carlos Silva, Artur Ferrão, Fábio Ladeiras, Ângelo Jesus, João Galamba, André Barroso, Diogo Miranda, João Pontes, Isabella Witte and Rodrigo Ascenso.

The event returns this year for its fifth edition, with a renewed partnership with Naturcôa and renewed energy for another year of great nature photography!



RENATO LAINHO

# Interview with Fábio Inácio, the “Sir 8.600km” for a wilder Portugal

*YOU READ THAT RIGHT: 8,600 KILOMETRES. THESE ARE THE KILOMETRES THAT FÁBIO INÁCIO HAS BEEN WALKING FOR SEVERAL MONTHS AND UNTIL JULY THIS YEAR, ACROSS FIVE DIFFERENT CONTINENTS, THROUGH SOME OF THE MOST REMOTE AND WILD LANDSCAPES ON THE PLANET. A CHARITY WALK THAT SUPPORTS THE WORK OF REWILDING PORTUGAL AND WHICH HAS ALREADY REACHED MORE THAN 30 PER CENT OF ITS FINAL GOAL. AN INTERVIEW TO FIND OUT MORE ABOUT THIS ADVENTURE IN FÁBIO INÁCIO'S LIFE.*



**Many have considered your plan and your journey to be ‘madness’ in a good way. Tell us more about the route you’ve been travelling and will be taking over the next few months. How many kilometres, how many countries, how many continents...**

Maybe it’s a bit normal to think this is “mad”... now that I’m walking, even I do. After hiking 4,300 kilometres in 108 days on the Pacific Crest Trail in 2019, I thought it would be fun to do twice as much and cross five continents. And more than that, to go to more technical and difficult terrain, as was the case in Nepal, because of the altitude, as is now the case in New Zealand’s South Island, where in several areas it looks more like a climbing than a hike. Nepal was beautiful, my body adapted very well to the altitude, I never had to do acclimatisation days, it was always uphill. But obviously I couldn’t do 30/35 kilometres a day, at least not every day. Here in New Zealand, where I am now, it’s been a much tougher challenge than I thought. A lot of time in forests, which I love, but almost always with a lot of mud where I’ve only done 1km per hour, a lot of rain and crossing rivers where you have to wait for the right time, and many kilometres on the road that have blown my feet off, but it’s the trail, so you have to accept it and walk. Now I’m on the South Island, I’ve reached a village after doing the Richmond Alpine Trail, which is part of the trail I’m doing, and it was beautiful, very rough, but beautiful. I have 7 days on the South Island where I have done over 250 kilometres with over 9,000 kilometres of positive accumulation, I have passed many people who take between 10 and 14 days to do this and many of them hitchhike on the road. The idea is to go to five continents. From here to the USA, walk the Appalachian Trail (I may pass through Chile first), then Morocco to climb

the Atlas and end up in Portugal. The walk ends on 15 July, with or without the 8600km done.

**It’s clearly not the first time you’ve done this and you’ve had similar experiences before, although not to this extent. Preparing for something like this is also fundamental, both physically and psychologically. How did you prepare for something like this?**

Honestly, I don’t prepare much. Then I see, learn, fail, overcome, etc., but already during the journey. I already had an idea of what a long walk would be like. 4,300 kilometres in 108 days is an average of almost 40 kilometres a day. With everything on your back: tent, sleeping bag, food for 4/5 days... it’s no joke. In other words, my preparation was to come and start and in between adapt to the terrain, the circumstances, everything. Now, if I had prepared everything and wanted to be almost certain that I could do the 8600km in the 8,5 months I have, I would have chosen another, much easier type of route and I didn’t do it because I really wanted something where it would be very difficult and very likely to fail. After almost three months here, I think I’m going to miss my goal, but I’m going to keep going and try to finish successfully. On a psychological level, it’s about accepting the not-so-good moments and enjoying the good ones. I’ve had days when I just want to hole up in the tent, cry non-stop and not leave for a few days, and others, fortunately most of them, when I have a smile on my face the whole time for being able to experience something so magical.

**The start wasn’t easy and you can explain why, but at the moment you’re managing to keep up with the expected pace. What have been the main challenges you’ve faced?**

As the great António Variações sang: When the head has no sense, the body pays. And that’s why the beginning was difficult.



In the last few months, because I've been psychologically down, even a little lost, I stopped exercising regularly and eating well, and as a result I gained weight and lost my physical shape. It's funny that sometimes we're in such bad shape psychologically that we end up sabotaging ourselves and doing even worse to our bodies. On top of that, back in Nepal, when I was about to start the trek, on the first day the only journey I made was to the hospital, because I woke up sweating, vomiting, diarrhoea, cold, heat, everything. I was diagnosed with dengue fever and had to rest for another 10 days. Fortunately, my body adapted quickly and, as we long-distance walkers call it, I now have 'trail legs'. I've been going at a good pace now, I've done several 50/60/70 kilometre days but I'm still behind where I should be at the moment and as I said before, I don't know if I'll be able to catch up because of the obstacles on the road itself. The weather here in New Zealand is very unpredictable. For example, I've already got lost in Tongariro National Park because I couldn't see a foot in front of me and turned back, I've had to wait almost half a day to cross rivers, I've had to walk a lot less than planned because of adversities that crop up. But once again, it's all part of it, it's not a walk in the park. When I go for things I always believe that I'll succeed, now I believe a little less, but I'll keep trying and in the end we'll see!

**You've travelled through wild and practically untouched landscapes. Looking back over all the time that has passed, which landscapes and/or species have most amazed you on this journey? Does the natural world continue to amaze you after so long?**

The moments that stand out the most for me are what I call 'National Geographic' moments, those when I feel like I'm part of nature, which was something I watched on TV when I was a kid. Here it happened in Nepal, especially when I reached the top of Nangkartshang at an altitude of over 5,000 metres, alone, just me and mountains of white peaks all around. At the start of the North Island here in New Zealand, I spent part of a day walking along a river with crystal-clear waters and then passed through an enchanted forest with all shades of green and then some, seeing birds of all colours, wild horses, the Tongariro National Park, the Tararua Mountains, the Richmond Alpine Way, the people of Nepal's small villages... and much more to come! The natural world makes me happy more than surprised.

**During this walk, you also decided to raise a considerable amount of money for Rewilding Portugal and make it a walk in solidarity for a wilder Portugal. Where did the idea come from and also this link with Rewilding Portugal?**

In 2019, when I finished the PCT, I decided that I wanted to do another longer, tougher hike, but I also decided that I wanted to be part of a cause. I

planned this trip for 2021, then 2022, but I couldn't get the conditions for it either, at the time I was thinking of other causes. At the end of 2022 I met Rewilding Portugal and fell in love with your work... So much so that I decided that this was the most important cause for me right now. I spoke to you and said that in 2023 I was going to do this project, once again I didn't succeed, but at least I became a patron, which I am to this day and will continue to be. Fortunately, in 2024 I got the financial conditions and here I am. I believe that we are part of nature and that it has countless benefits for us, both physically and mentally. It's not at all uncommon for someone to say that it was so good to be in the forest, mountains, waterfalls, etc., but then they get home and seem to forget how good it did them and get back into their routine without giving themselves time to be in nature. Then I attach immense importance to all the wildlife that has every right to be there. One of the most incredible things that has happened to me in my life was being close to a mother and baby bear, as well as more bears and a cougar along the way, just me and them, in the middle of a forest in northern California, I can't explain everything I felt. All the work you've been doing with the (re)introduction of wild and semi-wild animals, such as bison and horses, is marvellous. I really want to see a greener, wilder Portugal and you're doing a very good job of that. Hence my support and attempt to raise some funds for this cause, which is to everyone's benefit.

**This 'crazy' journey will still take some time, but is it something you want to replicate in new places throughout your life? Is the bug too strong to stand still?**

Smaller things, yes! I've been travelling extensively between personal and professional projects since 2014 and I really miss spending more time at home. I miss a lot of things, important moments with family and friends that I've been missing out on. I'm not complaining, it was a choice I made, but I want to have more time in Portugal after this. Now, of course, I'm going to carry on doing my own thing and some more extreme ideas are bound to come up.





**NEW!**

↪ CÔA fleece sweatshirt

PROJETO **SERRA**

Buy now in  
our e-shop

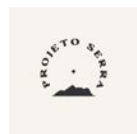


# PARTNERSHIPS

## FUNDING



## Others



## COLABORATIONS

### Strategic Partner

### Project Partners

## PATRONS

VASCO COTOVIO, CÉSAR CARPINTEIRO, LUÍS CARDOSO, FLORIAN MARTIUS, JOÃO AMORIM, FRANCISCO SANTOS, MIGUEL MONTEIRO, RITA AHLBORN, KENNETH SCOTT, CARLA BERNARDES, RITA LEAL, MÁRIO BARREIRA, CHARITY KAHN, ANDRÉ CAMPOS, JOAQUIM FREITAS, TIAGO CAXIAS, MIGUEL VELLOSO, CARL SPURLING, TIAGO RIBEIROS, AHREN JEFFRIES, ANDRÉ VAN ECK, SÉRGIO PEREIRA, ILENE STERNS, CYNTHIA MCLEAN, WILLIAM TAYLOR, VASCO MAYA, JUSTINE MOXHAM, LUÍS AMARO, MÁRCIA CARVALHO, YONATAN GEZ, ANDRÉ BRANDÃO, TERESA RAMOS, CRISTINA MONTEIRO, JORGE TEIXEIRA, CRAIG TYLENDIA, SANDRA BAPTISTA, FILIPE COSTA, CLÁUDIO BORGES, IVAN HERMANS, JOSÉ AZEVEDO, LAURA HOUSTON, TANCHIA MCKNIGHT, RICARDO ROCIO, ARTUR OLIVEIRA, JOÃO MANZARRA, MARGARIDA SOUSA, MARIA DANIEL, RUI RODRIGUES, HECTOR, GUILHERME CASTRO, FÁBIO INÁCIO, ARANKA VAND DER POL, ADRIANA ALMEIDA, PAUL JOSEFSSON, ALEXANDRE HUSUM, DAVID SCHAICH, PEDRO FALCÃO, JORGE COSTA, PEDRO VIANA, CATARINA PALMA, LUÍS AFONSO, NÁDIA CABRAL, FIONA, MARLIZE, MÁRCIA AUGUSTO, ANA SOUSA, DIOGO MARTINS, JORGE CURRAL, CARLA COSTA, HÉLIO RODRIGUES, RUI QUINTA, ANDREW BLANDY, CARLA RIBEIRO, DAVID SCHUBACH, KAREL LEEFTINK, RICARDO PERES, CEAL SMITH, EOS STUDIO, SALVADOR VASSALO, ANA DO AR, RUI MAIO, ALEXANDRE LEMOS, SUSANA CALHAU, TIAGO FILIPE, FÁBIO RODRIGUES, JOSEPH KORPA, REBECCA ROSENBLUM, EDWARD WOODS, DUARTE FERREIRA, KATERINA TADENEV, FILIPE MATOS, PEDRO TRINDADE, JOÃO LOPES, ALBERTO CRUZ, JOÃO PROENÇA, ALISTAIR, BRUNO BARRADAS, TIAGO AMARAL, RICARDO COELHO, MANUELA VIEIRA, PEDRO SOARES, ANDREY MIKHAYLOV, FILIPA CHATILLON, HELENA, NUNO SILVA, CRISTÓVÃO ROCHA, NUNO ESTEVES, LOUISE BENTLEY, LUISA MENANO, ERIKA, JOAO SILVA, JON WARD, TERRE RYBOVICH, CRISTÓVÃO PINTO, IBERIAN WANDERER, INÉS CATANA, JOSÉ GOMES, EVA SCHUSTER, INÉS NEVES, JORGE LOPES, JEAN, ALICIA, ERIK, FERNANDO MENDES, HENRIQUE PIMENTEL, ISABELLA PETERS, JOÃO GONÇALVES, MIGUEL PERNÃO, NUNO LOPES, CARMO DINIZ, DIANA SOUTINHO, PEDRO ISAÍAS, CAMILA JONATHAZ, BEATRIZ DANIEL, JUSTINE PISSARA, SANDRA DOURADO, DIOGO TEIXEIRA, HARRISON GRADY, MIGUEL BARREIRA, CATARINA LOBO, CLÁUDIA HONÓRIO, BARRY ALLEN, OBERON VAN HOVELL, TAY



NELLEKE DE WERD

# Support our work

There are several ways to support Rewilding Portugal’s work. Visiting the Greater Côa Valley and our rewilding areas through the various members of the Wild Côa Network who operate in them is a way of contributing directly to the region’s conservation efforts, as a small percentage of the cost of these offers goes back to the organisation. In addition, using the network’s services and products is always a positive and practical way of supporting nature-based businesses in the region that support the rewilding initiative.

With the opening of the Rewilding Centre as local accommodation, if you need to sleep in the region, choose to sleep with us in our new space and thus also contribute to funding our actions and, while you’re at it, visit the Ermo das Águas rewilding area just outside the door.

Alternatively, for companies interested in developing Corporate Social Responsibility models, there are several options, such as:

- Financing the acquisition of land dedicated to nature conservation;
- Acquire carbon credits and/or rewilding credits (still under development);
- Bring your employees/board members to our Nature Positive Rewilding Weeks/Weekends, team building activities in nature organised to suit your company;
- Purchase our corporate rewilding boxes of local and nature-based products;
- Support the strategic expansion of rewilding in Portugal.

Finally, Rewilding Portugal is on Patreon and you can support the organisation with a small

monthly contribution, entitling you to exclusive content about the organisation’s work. The subscription can be cancelled at any time. To subscribe to our Patreon, simply follow this link: [www.patreon.com/rewildingportugal](http://www.patreon.com/rewildingportugal)



*Subscribe our Patreon here!*

-  [www.facebook.com/rewildingportugal](http://www.facebook.com/rewildingportugal)
-  [www.instagram.com/rewilding\\_portugal](http://www.instagram.com/rewilding_portugal)
-  [www.linkedin.com/company/rewildingportugal](http://www.linkedin.com/company/rewildingportugal)
-  [www.tiktok.com/@rewilding.portugal](http://www.tiktok.com/@rewilding.portugal)
-  [www.twitter.com/rewildingportug](http://www.twitter.com/rewildingportug)
-  [www.youtube.com/@rewildingportugal4143](http://www.youtube.com/@rewildingportugal4143)

# cantinho.café

#craftbeerloversmeetingpoint

In memory and honour of João Paulo de Sousa, manager of Cantinho Café, a member of the Wild Côa Network, who physically left us in 2025.





[www.rewilding-portugal.com](http://www.rewilding-portugal.com)

[info@rewilding-portugal.com](mailto:info@rewilding-portugal.com)